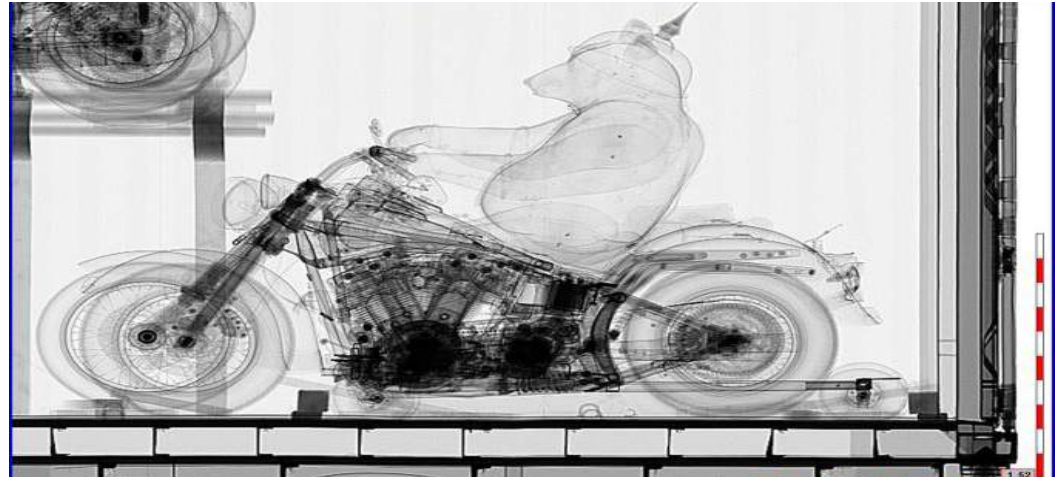




Customs Administration of the
Netherlands
Ministry of Finance

High volumes Customs enforcement

Frank Heijmann
Head of Trade Relations
fha.heijmann@douane.nl



Source of all images Netherlands Customs unless otherwise indicated



Customs Administration of the
Netherlands
Tax and Customs Administration

The challenge:

**Implementing algorithms
in real time processing**

The balance:

Facilitation & Supervision


The new dilemma:

Fast growing volumes


The solution?

From effectiveness to effectivity


Safety and security




Fiscal protection



Dumping protection



Product safety
Protection of health, economy, environment




Source harbor authorities Rotterdam

The needs for Customs:

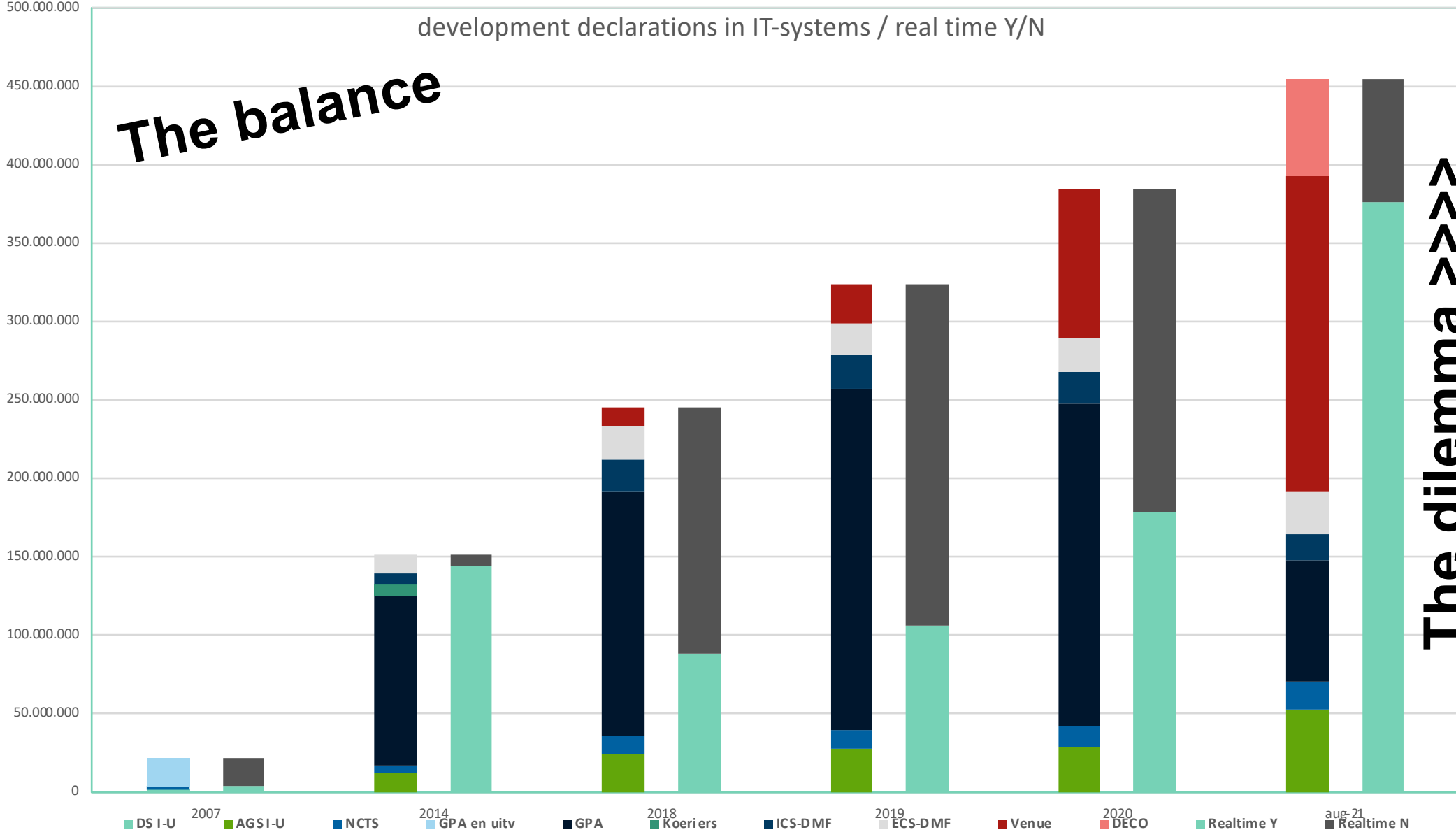
Inspections are effective

The needs for Trade:

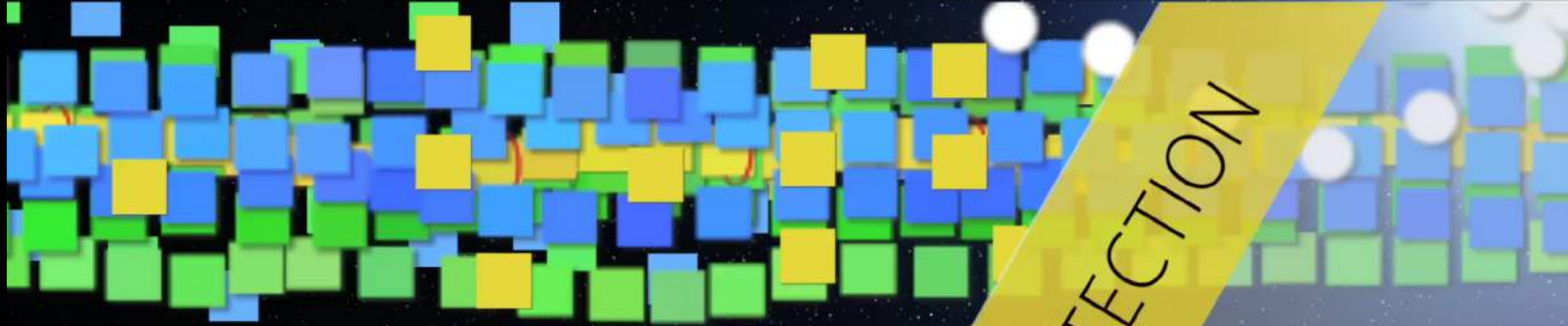
Joint inspections fast & efficient

development declarations in IT-systems / real time Y/N

The balance



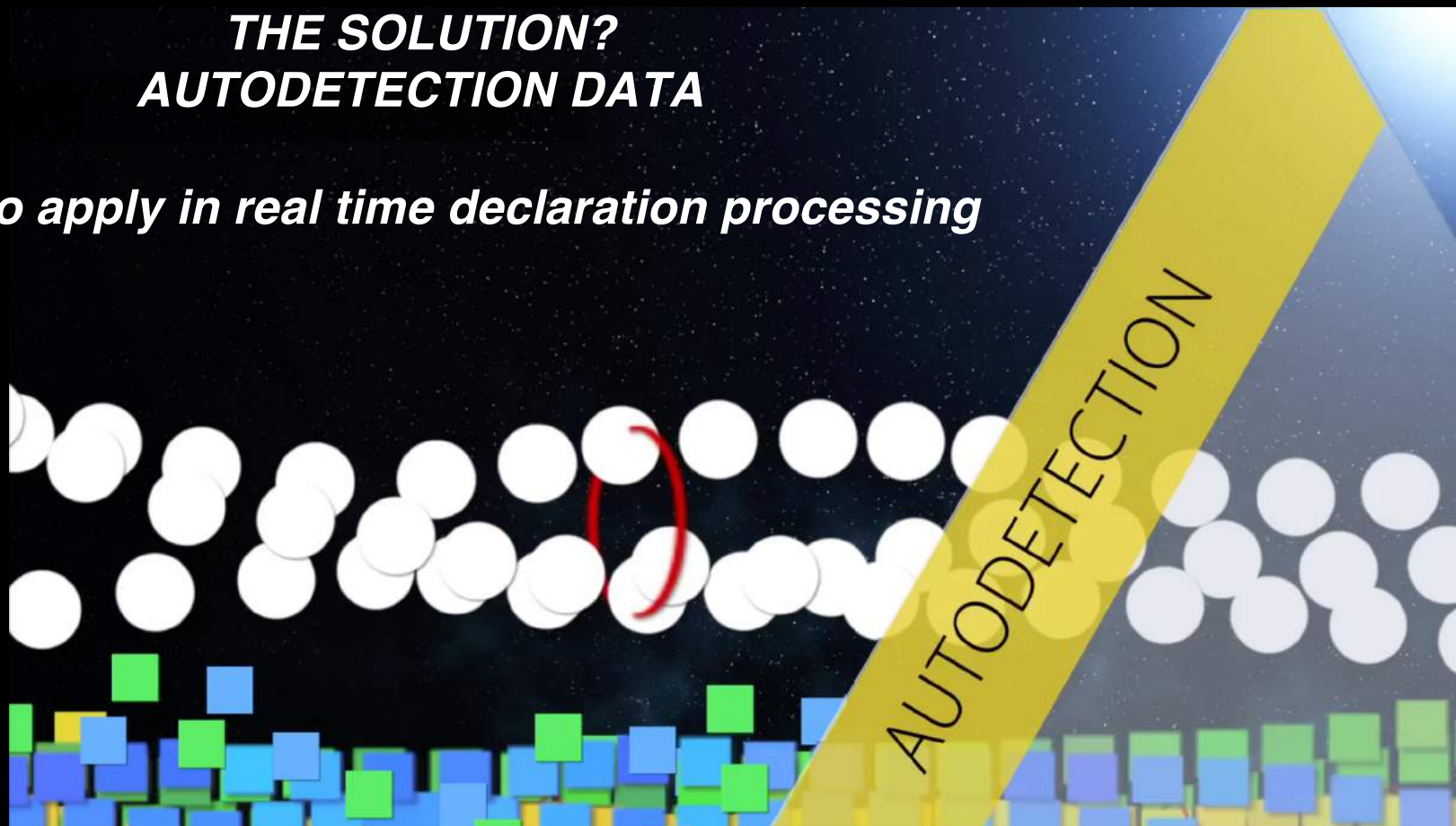
The dilemma >>>>



THE SOLUTION?
AUTODETECTION GOODS
What's risks to detect by algorithms

***THE SOLUTION?
AUTODETECTION DATA***

How to apply in real time declaration processing



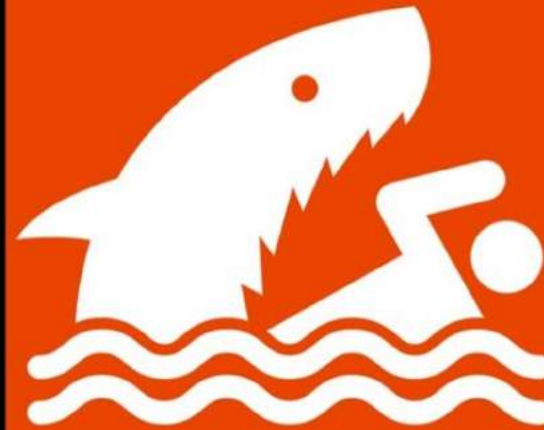
HAZARD

A **HAZARD** is something that has the potential to harm you



RISK

RISK is the likelihood of a hazard causing harm



The solution: FROM IF-THEN SELECTIONS
TO
DECISION TREES - ALGORITHMS