

Scanning the Threat Landscape

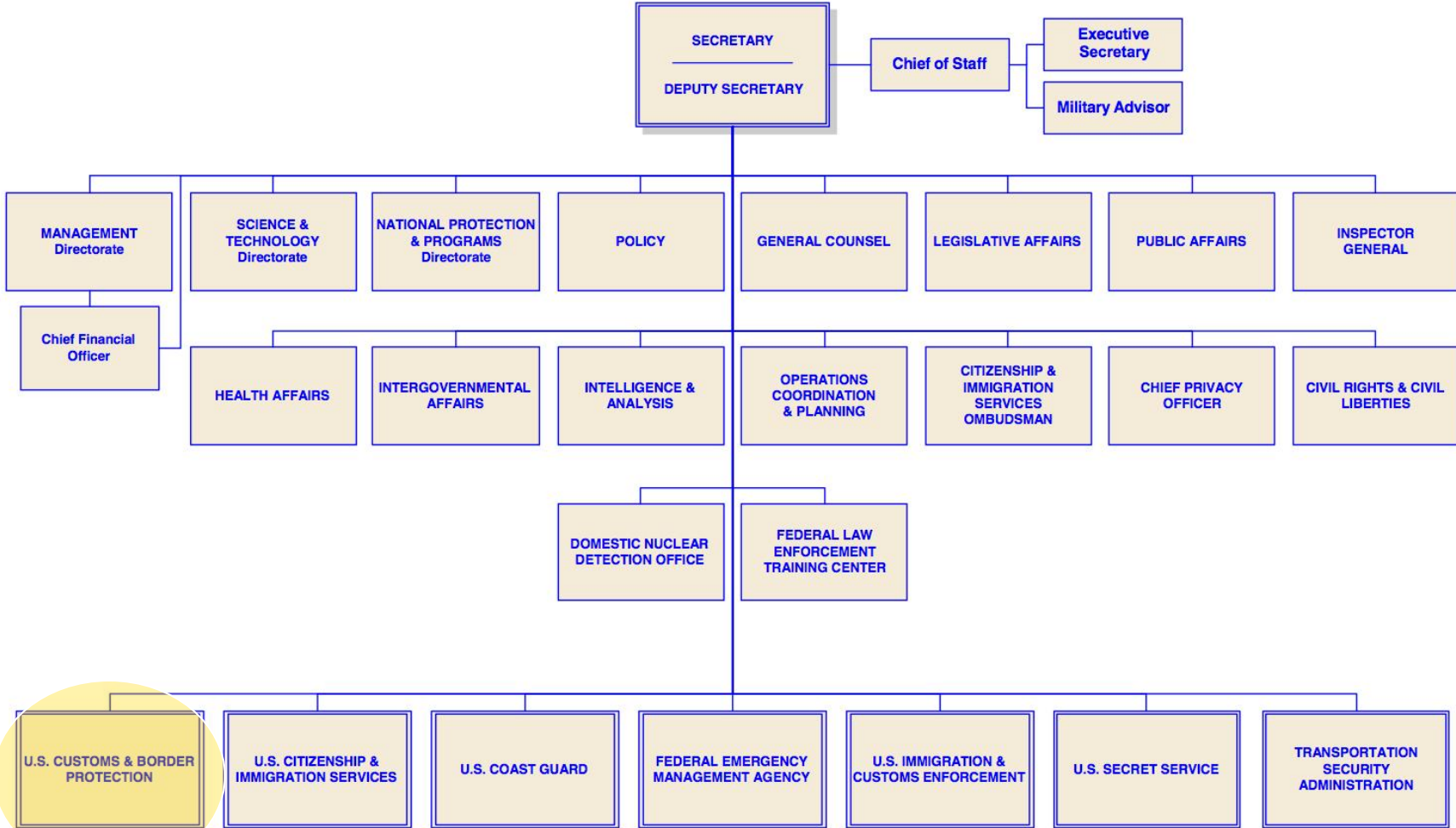
Non-Intrusive Inspection Division - OFO

June 20, 2018



U.S. Customs and
Border Protection

U.S. DEPARTMENT OF HOMELAND SECURITY



U.S. Customs and Border Protection

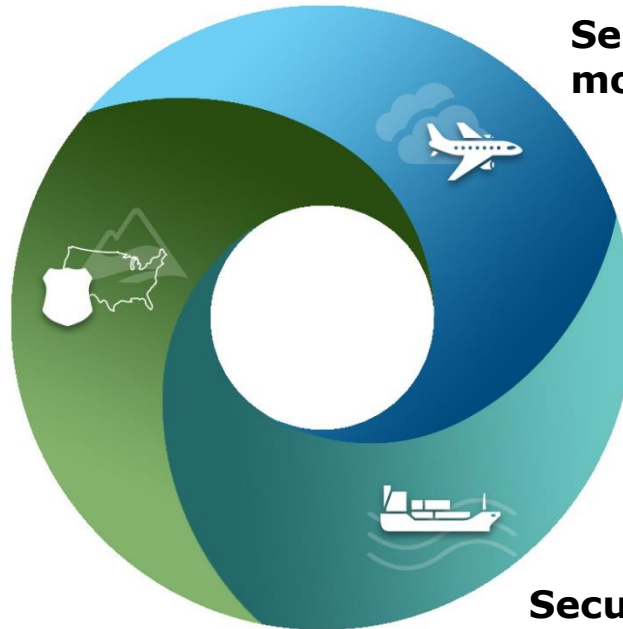
CBP Mission



CBP MISSION

To safeguard America's borders thereby protecting the public from dangerous people and materials while enhancing the Nation's global economic competitiveness by enabling legitimate trade and travel.

**Securing
America's borders**



**Securing and expediting the
movement of people**

**Securing and expediting the
movement of goods**



**U.S. Customs and
Border Protection**

CBP Mission



CBP MISSION

To safeguard America's borders thereby protecting the public from dangerous people and materials while enhancing the Nation's global economic competitiveness by enabling legitimate trade and travel.



| UNITED STATES BORDER PATROL (USBP)

USBP is responsible for responding to all illegal traffic that crosses the border between the official Ports of Entry.



| OFFICE OF FIELD OPERATIONS (OFO)

OFO facilitates traffic through the official Ports of Entry.



| AIR AND MARINE OPERATIONS (AMO)

AMO provides aerial and marine support for CBP.



U.S. Customs and
Border Protection

NIID Mission & Objectives

NIID MISSION

Deliver the best-value technological tools and processes that enable CBP Officers and Agents to perform safe, reliable, effective, and efficient non-intrusive inspections – to prevent, detect and interdict contraband and threats from entering or leaving the U.S.

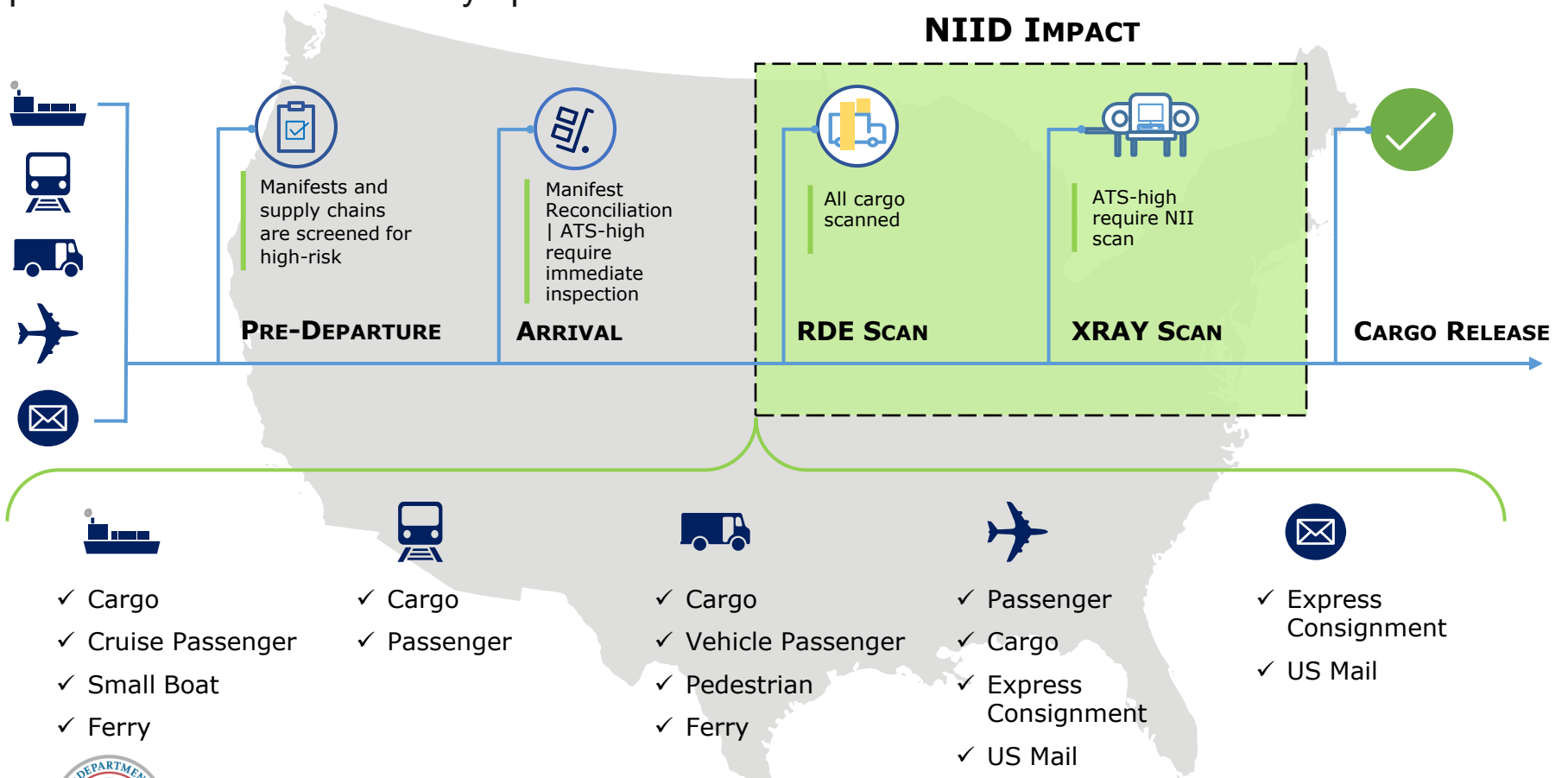
NIID OBJECTIVES

- 1** Develop **agile and integrated NII operations** and increase NII inspection rates to strengthen border security and management. Redirect CBPO personnel to other high-priority mission areas.
- 2** Integrate NII & RDE Systems with the CBP network and law enforcement IT systems to provide operational enhancements, situational awareness, **automation**, and **interoperability**.
- 3** Enhance and expand NII portfolio through **technology refresh** and a process of continuous improvement while sustaining existing NII capabilities.



NII Division's Critical Role

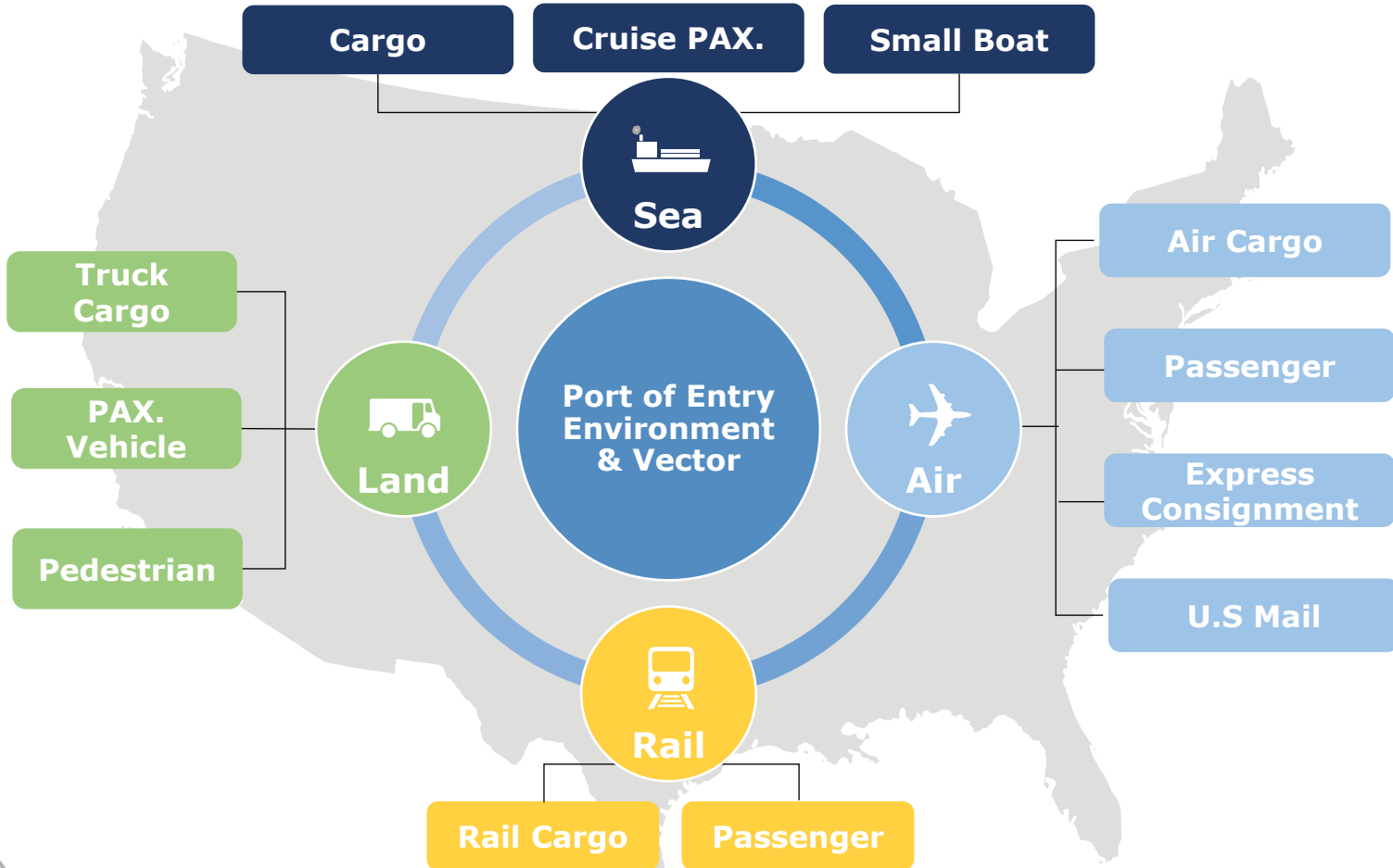
The NII Division plays a pivotal role within CBP's overall layered enforcement strategy. As the critical checkpoint before cargo release within U.S. borders, NII and RDE technology is a crucial part of CBP's border security operations.



Dynamic Operational Landscape



The NII Division supports field operations that face a dynamic operational landscape.



U.S. Customs and Border Protection

Dynamic Operational Landscape

To best adapt to this dynamic landscape, NIID has to consider three key challenges when making technological procurement and strategic deployment decisions.



Diverse Operational Environments

- Each vector presents unique mission challenges
- Different technologies have certain advantages for some environments over others



Dynamic Port Compositions

- Specific mission needs and CONOPs are defined by each port
- Ports face location-specific threats based on the composition of commodities and carriers at that port



Evolving Smuggling Methods

- Bad actors have a strong financial incentive to innovate their smuggling methods
- Scanning technologies should anticipate changes in smuggling technologies

Facing the Challenge

NIID aims to implement a three-pronged approach to those challenges and needs feedback from innovative thinkers in academia and industry on the solutions that will enable these goals.

OPERATIONAL INTEGRATION

NIID will integrate across operations and systems

- Command Center Concept
 - Cross-functional Integration of Operations
 - Integration of Project Portfolios
- Systems Integration of NII and RDE Equipment

Benefit:

- Increase situational awareness
- Standardize and streamline NII port operations

TECHNOLOGICAL INNOVATION

NIID will test and deploy innovative technology for emerging threats

- Testing State-of-the-Art Tech
- Standardized Interfaces
- Image Analysis Algorithms
- Adaptable Threat-detection Equipment
- Predictive Analytics

Benefit:

- Improve detection capabilities
- Anticipate evolving threats

DATA AUTOMATION

NIID will fully automate data collection and reporting

- Automated Data Collection
- Near Real-time Data
- Mission-driven Analytics
- Better Data Quality and Storage

Benefit:

- Increase insight-driven decision-making
- Better understanding of performance by vector

Operational Integration



NIID's vision for integration of NII and RDE operations and systems at the port will enhance the scanning and processing capabilities at ports of entry.

Dynamic Port Compositions:

- Require additional integration to improve efficiency

Emerging Threats:

- Require integrated interdiction capability



OPERATIONAL INTEGRATION

NIID will integrate across operations and systems

- Command Center Concept
 - Cross-functional Integration of Operations
 - Integration of Project Portfolios
- Systems Integration of NII and RDE Equipment

KEY CONCEPTS FOR THE FUTURE

Command Center Operations

Ports will be able to analyze data, monitor traffic, and respond to threats from centralized local command centers.

Benefits:

- Improved port **resource allocation**
- Streamlined processing
- Increased situational awareness

Integrated Viewing Platform

Officers in command centers will be able to analyze both NII images and RPM data on one integrated viewing platform.

Benefits:

- More **informed threat analysis**
- Faster anomaly identification
- Combined NII and RDE operations



Technological Innovation

NIID's approach to innovative procurement processes will empower ports with the most crucial law enforcement tools in order to protect borders from evolving threats.

Evolving Smuggling Methods:

- Require innovation to combat new smuggling strategies

Diverse Operational Environments:

- Different port operations and imports require innovative new solutions



TECHNOLOGICAL INNOVATION

NIID will test and deploy innovative technology for emerging threats

- Testing State-of-the-Art Tech
- Standardized Interfaces
- Image Analysis Algorithms
- Adaptable Threat-detection Equipment
- Predictive Analytics

KEY CONCEPTS FOR THE FUTURE

Innovative Testing

Through innovative consortiums and focused pilot tests, NIID will seek and identify key mission-critical technologies.

Benefits:

- Anticipate smuggling threats and methods
- Informed requirements development

Image Analysis Algorithms

Officers scanning cargo will be assisted by algorithm-enhanced detection tools.

Benefits:

- Accurate **anomaly identification**
- Increased processing speed
- Reduced false positives



Data Automation

NIID's data automation strategy will enable the division to gain valuable insight on equipment performance in the context of port environments and mission needs.

Diverse Operational Environments:

- Require on-going data to manage resources

Evolving Smuggling Methods:

- Require near real-time data analytics to adapt quickly



DATA AUTOMATION

NIID will fully automate data collection and reporting

- Automated Data Collection
- Near Real-time Data
- Mission-driven Analytics
- Better Data Quality and Storage

KEY CONCEPTS FOR THE FUTURE

Automated Data Collection

Ports will experience reduced administrative tasks and more available resources for law enforcement activities

Benefits:

- Streamlined processing
- Improved port resource allocation
- Increased mission insight

Mission Driven Analytics

Headquarters will have a better understanding of system performance in various environments and scenarios

Benefits:

- Field-informed procurements
- Increase insight-driven decision-making



Questions & Answers

