

# Introducing Thruvision

## Fast, safe, people-screening

Kevin Gramer  
VP, Americas

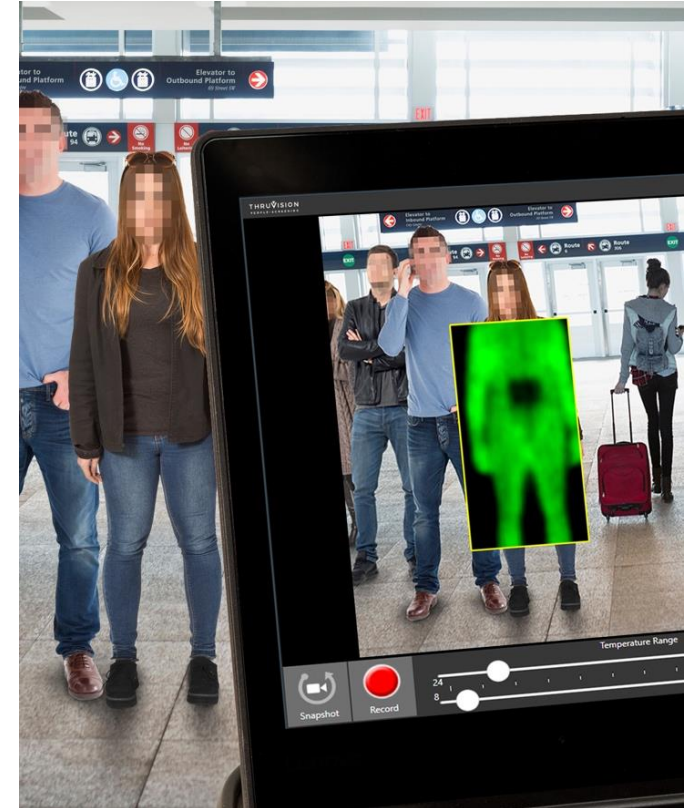
THRUVISION  
PEOPLE-SCREENING



# Introducing Thruvision ...

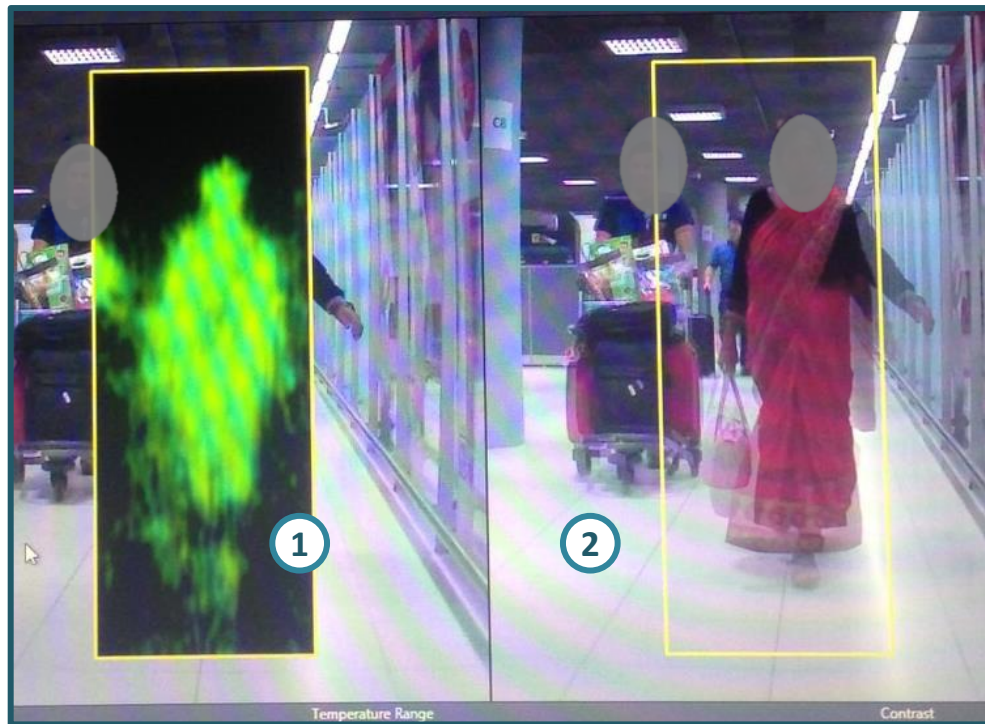
## Fast, safe and proven people-screening technology

- ▼ Independent UK/US-based security technology company with mfg. in Florida
- ▼ Patented passive, terahertz technology
- ▼ High throughput, “stand-off” detection
  - Shows **location, size, shape** of concealed items at **8m+**
  - Up to **2,000** people per hour
- ▼ Operationally proven
  - TSA tested
  - In-service in 12 countries across UK, Europe, Middle East, Asia and Americas
- **1M+ people arriving everyday**
  - Is it possible to screen all people entering the US?



# What is Thruvision ... ?

Proven people-screening camera that sees any type of item hidden in visitor's clothing



1 - Class A drugs taped to legs of drugs mule  
2 - Detected made as person was leaving airport

Safely used to see ...

- ▼ Electronics
- ▼ Cash
- ▼ Narcotics
- ▼ Weapons
- ▼ Other contraband



**THRUVISION**  
PEOPLE-SCREENING

# Flexible and quick to deploy ...

**Relatively small, light-weight cameras that can be deployed quickly and in a variety of different ways**

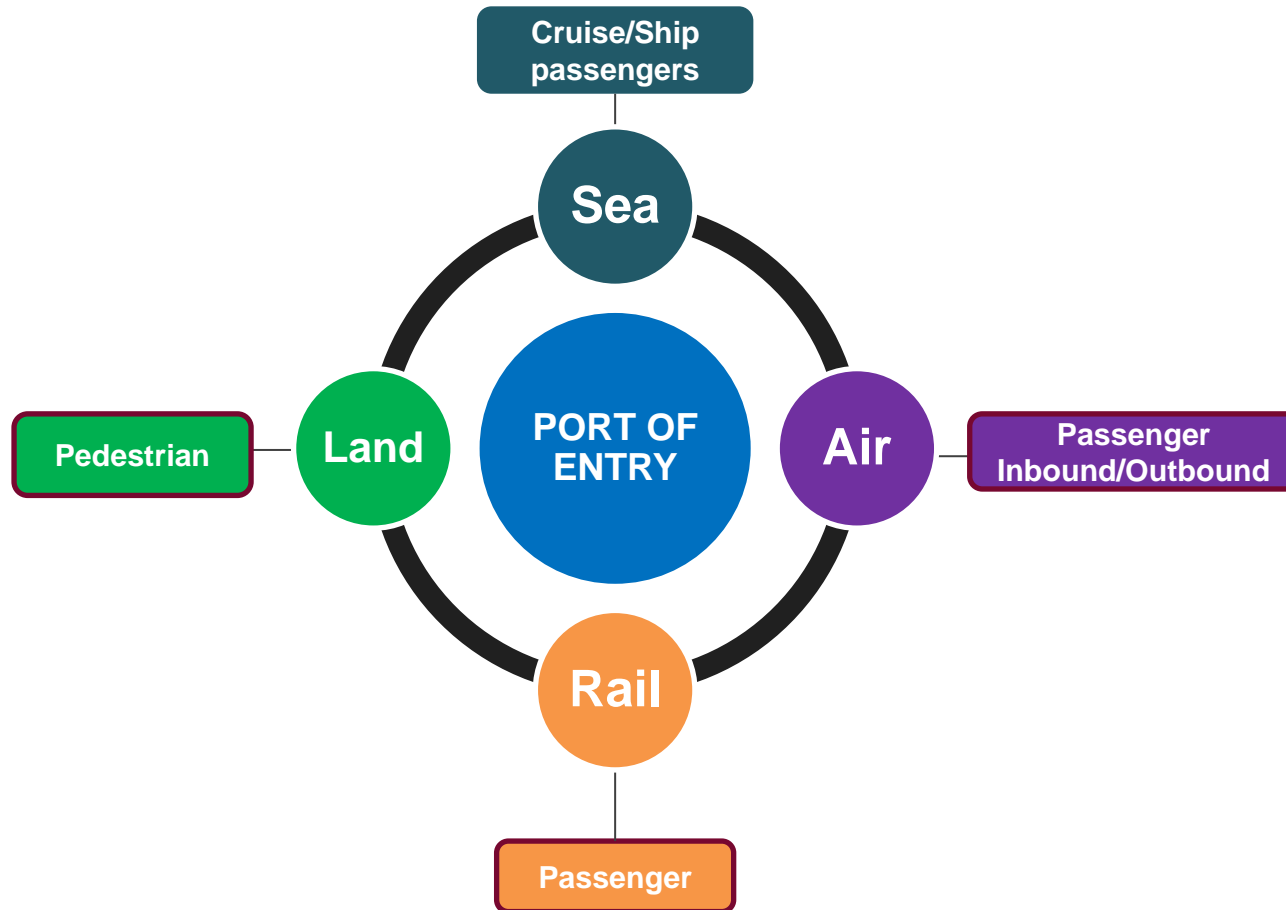
- ▼ Fixed or wheeled stands
- ▼ Full battery-equipped tactical deployment systems
- ▼ Ethernet connection for remote viewing or integration with VMS
- ▼ Operational in 15 minutes from unpacking





# Customs Applications

## Thruvision applications for customs

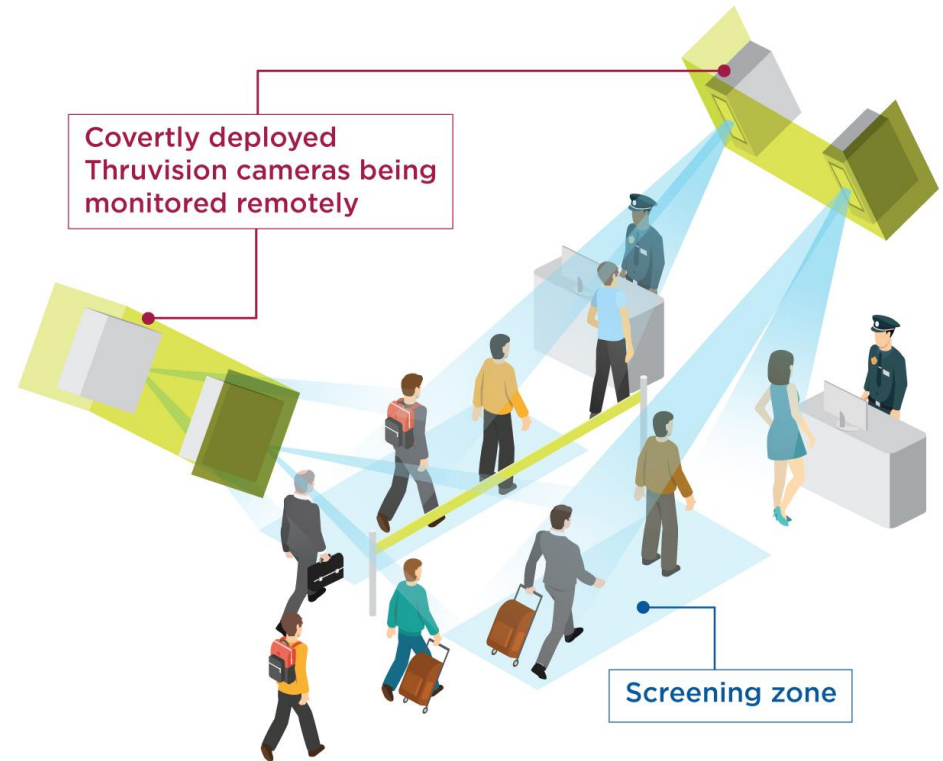
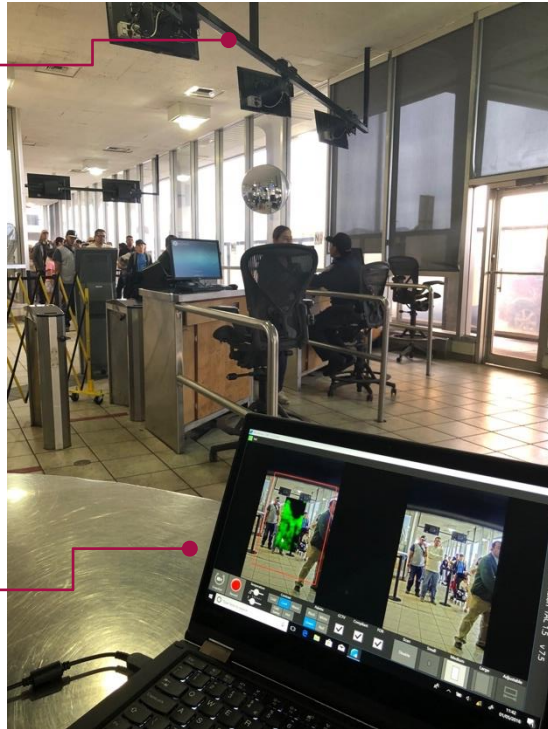


# Inbound fixed pedestrian screening

## Fixed, covertly-deployed Thruvision units for inbound screening

Utilize overhead gantries to mount cameras

Monitoring can be done in remote control room rather than in sight of visitors



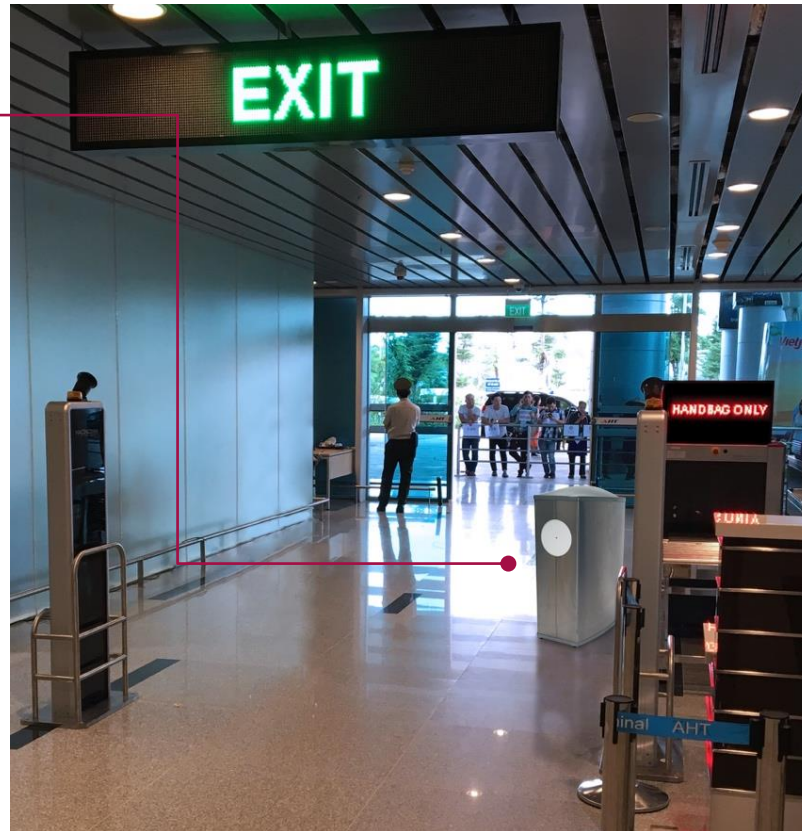
# Outbound fixed pedestrian screening

Fixed, semi-covertly deployed Thruvision units for outbound screening

Fixed concealment  
deployed in  
outbound  
pedestrian area

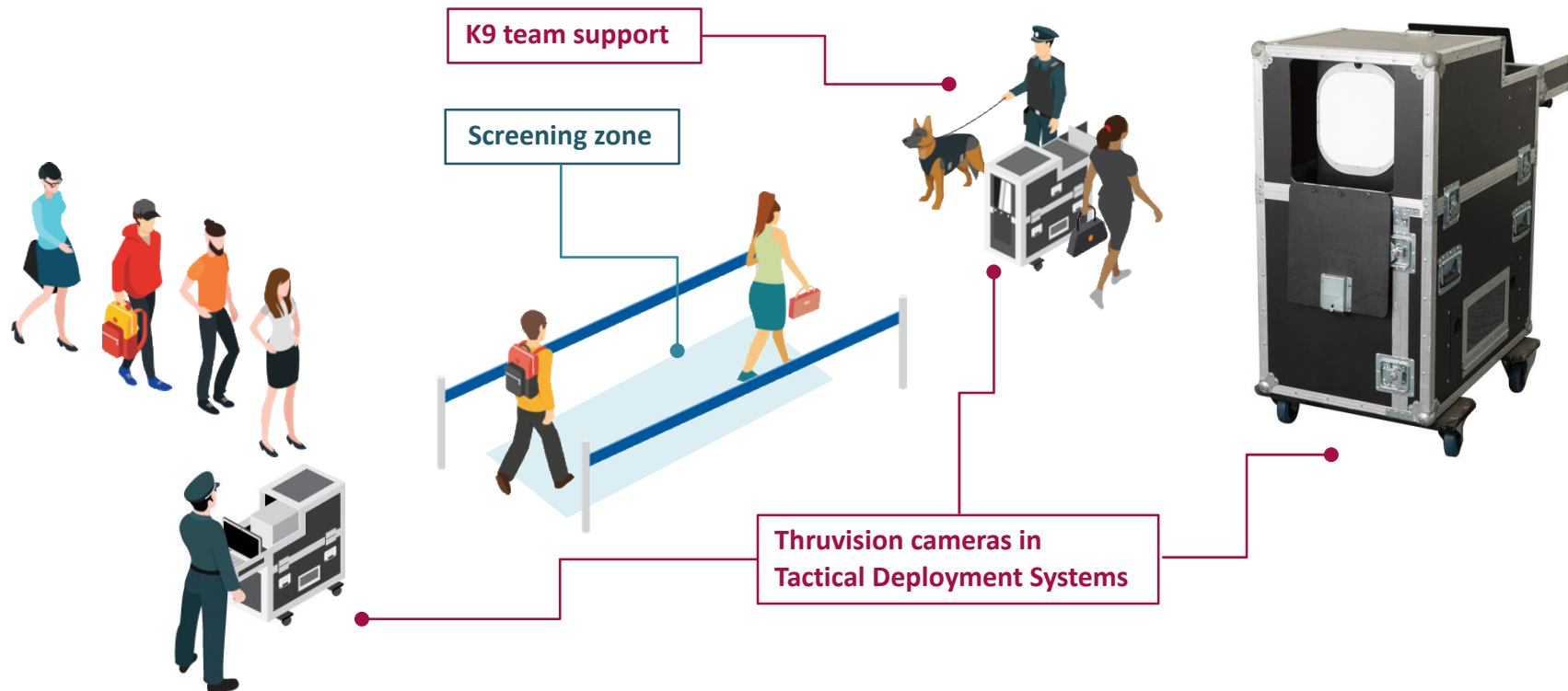


Fixed concealments  
manufactured to  
house Thruvision  
units



# Inbound mobile bus passenger screening

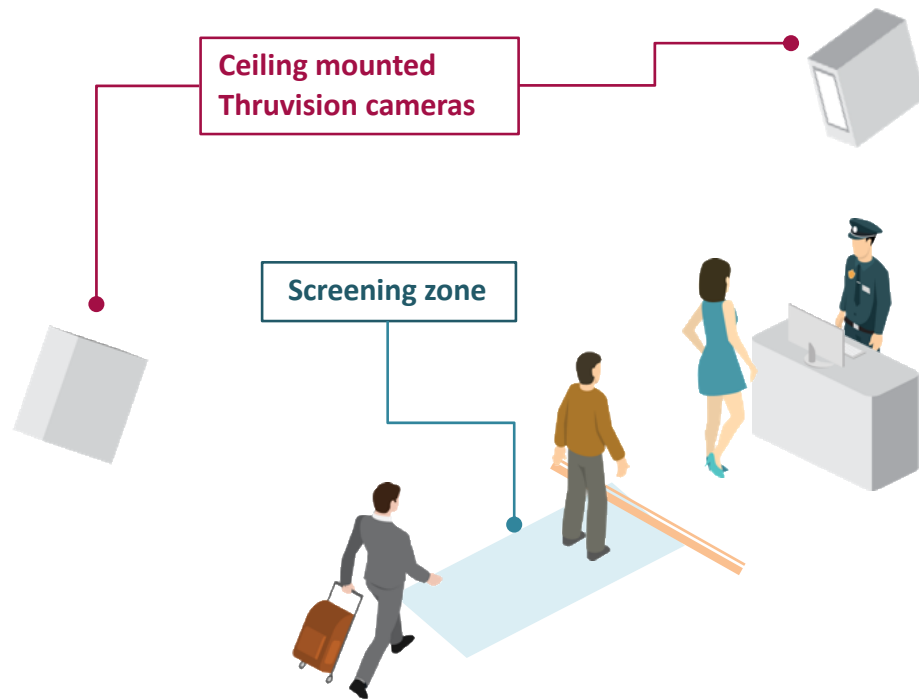
Mobile, overtly deployed Thruvision units for inbound screening of bus passengers





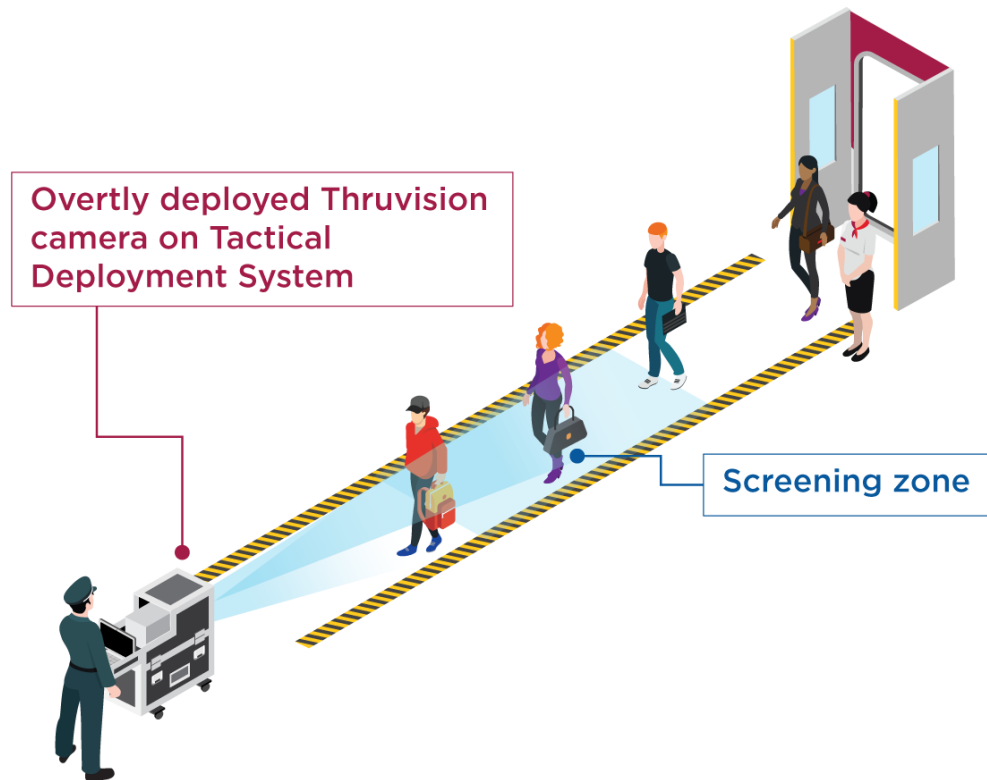
# Inbound airport passenger screening

Overtly deployed Thruvision units for inbound passenger screening at the customs line



# Inbound and outbound jetway screening

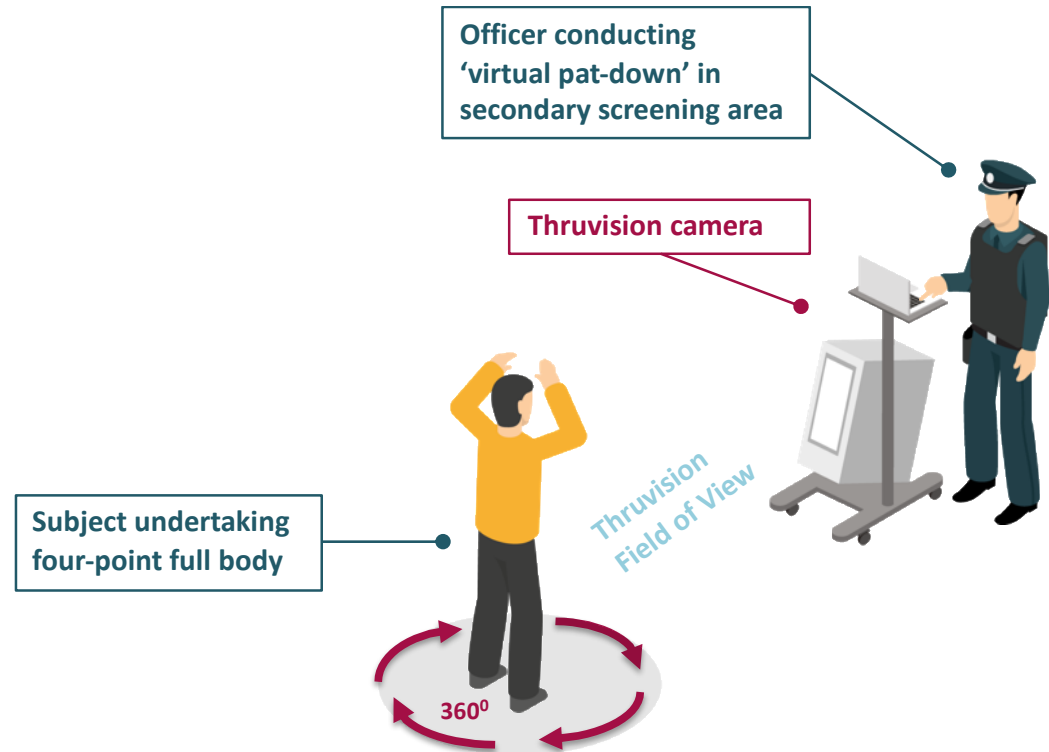
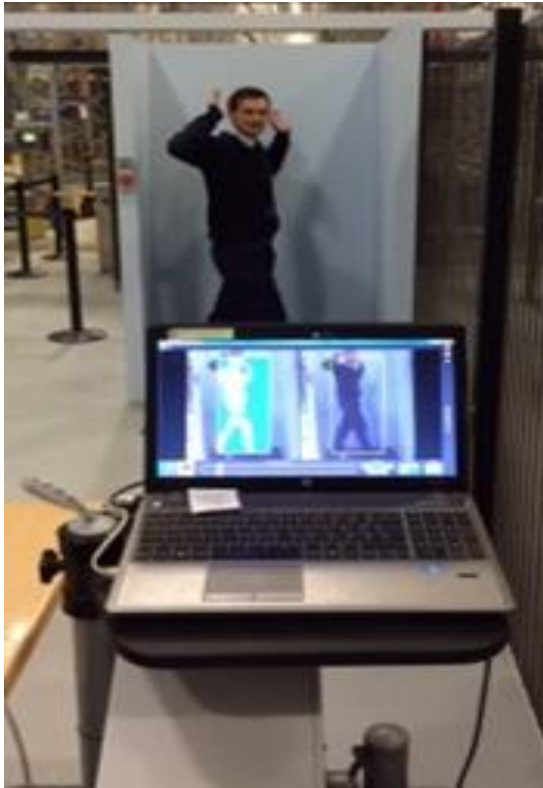
Mobile, overtly-deployed Thruvision units for screening inbound and outbound passengers on jetways



**THRUVISION**  
PEOPLE-SCREENING

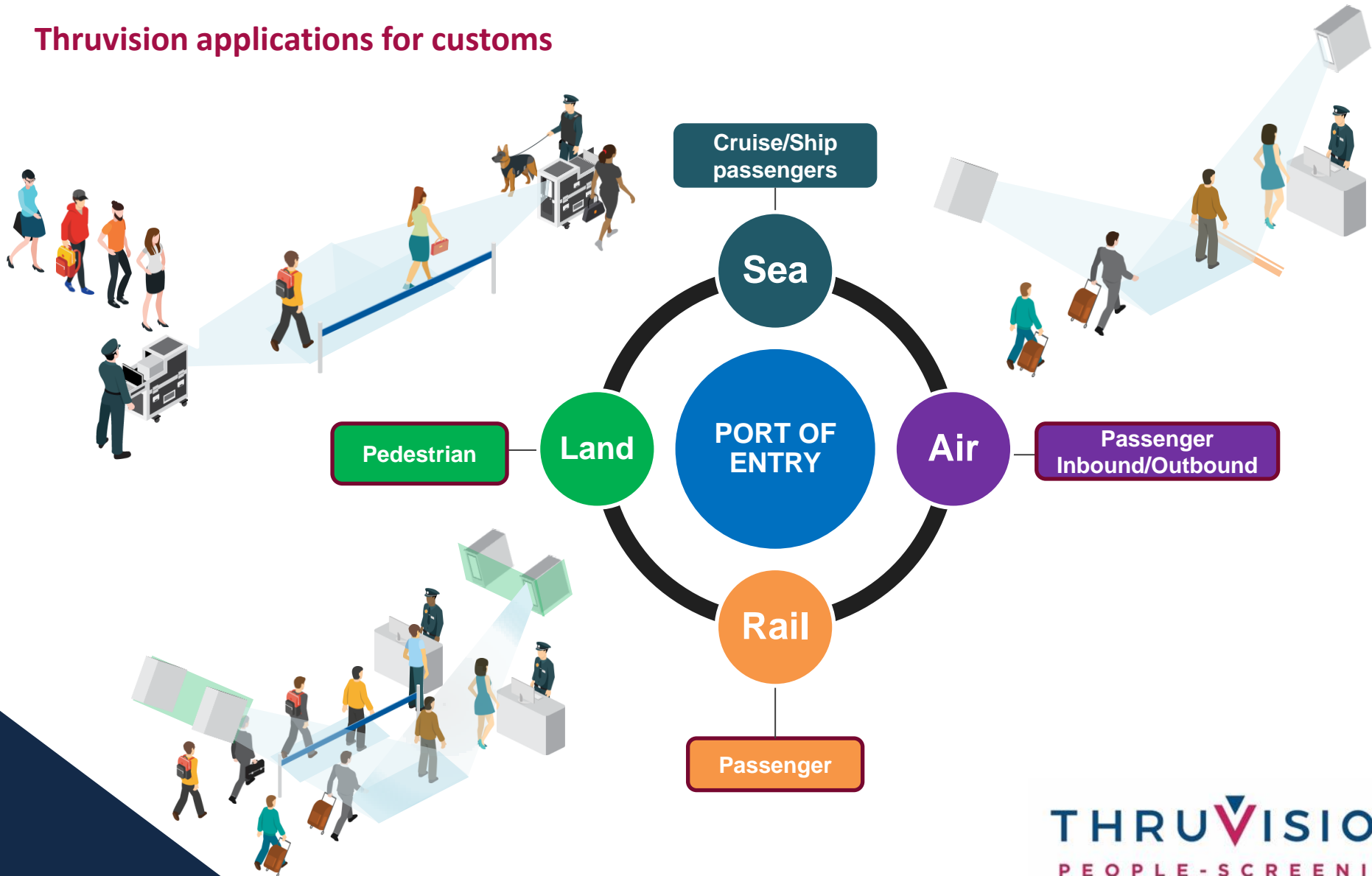
# Secondary screening 'virtual pat-downs'

Thruvision units can be deployed for 'virtual pat-downs' on individuals sent to secondary



# Customs Applications

## Thruvision applications for customs







**Kevin Gramer**

VP Americas

P: 540-878-4844

Ashburn, VA

[kevin.gramer@thruvision.com](mailto:kevin.gramer@thruvision.com)

Thruvision Limited  
121 Olympic Avenue  
Milton Park  
Abingdon  
Oxon, OX14 4SA  
t: +44 (0) 1235 436180  
[www.thruvision.com](http://www.thruvision.com)