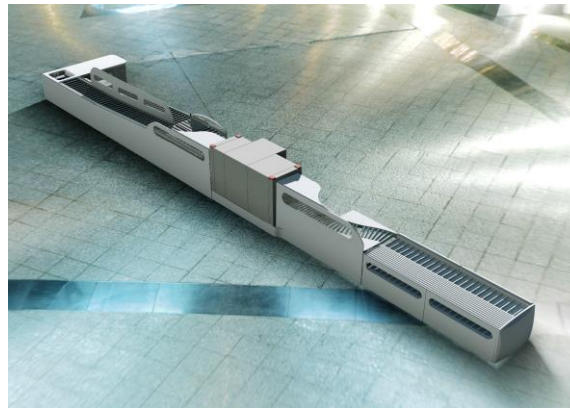


Automation Systems Within Security Screening Areas

Presented by
Colin James

MacDonalld Humfrey Automation Limited





- What is the Problem Being Faced by Airports?
 - Need for Increased Security
 - Having to Prove Their Compliance
 - Keeping Their Customers Happy; Airlines and Passengers
 - Keeping Their Stakeholders Happy
 - Increasing Operating Costs; Resource and Equipment
 - Lack of Capacity to Deal with Increasing Passenger Numbers
 - Inefficiencies
 - Need for Higher Throughput
 - Building Constraints
 - Queues
 - Lack of Data to Identify The Root Cause and Effect of the Problem
- The Answer..... Automation Systems? Mach-Secure Products?

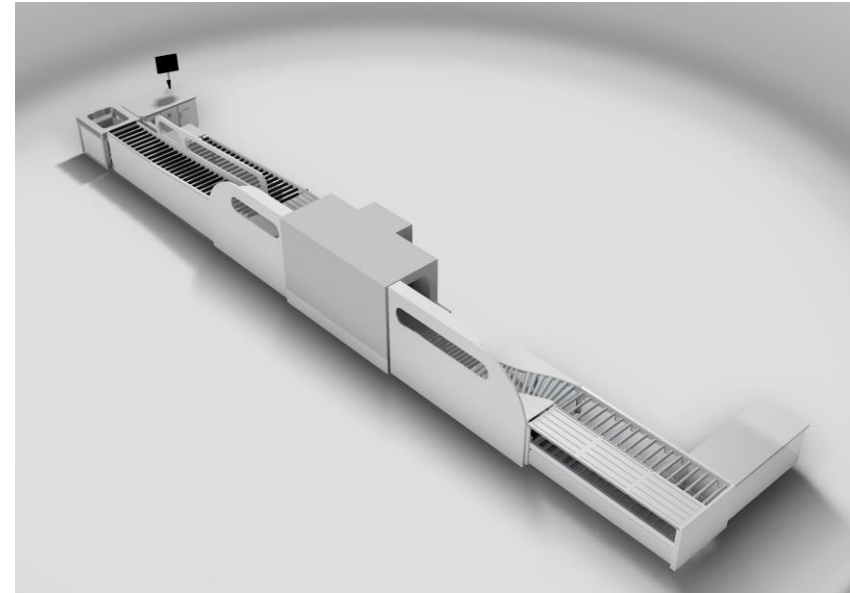


Our Company

- A Private Company Providing Automation Systems for Aviation, Automotive and Logistics Industries for over 27 Years
- In 2007 we Embarked on Developing Hardware and Software Products to Improve Security, Compliance and Performance of Outbound Security Systems
- The Largest Integrator of Tray Return Systems; Having the Largest Number of Reference Sites and the Largest Install Base
- We have Experience Working in All Sizes of Airports; From 2 to 130 Lanes
- First Company to Install a Full Directive Search System
- First Company to 'Go live' with a Remote Screening System
- We have a Portfolio of Products Providing a Holistic Approach to a Fully Integrated Security Screening Area

The Drivers for Automation

- Enhance Security
- Improve Compliance
- Reduce Overall Operational Costs
- Eliminate Inefficiencies
- Improve Staff Performance
- Minimise Manual Handling
- Improve Passenger Experience
- Reduce Waste; Time and Effort



How to Meet the Objectives

- Introduce Lean Manufacturing Processes
- Introduction of Automated Systems
- Provide Software 'Tools' to Efficiently Manage the Operations, Provide Real Time Data of System and Personnel Performance
- Provide Visual Feedback Systems to Staff and Passenger
- Creating Teamwork within the Security Staff
- Instil Good working Practices for Staff to Excel in their Job Function
- Review Job Roles and Responsibilities – Deploy 'Best At' Job Roles
- Remove Unnecessary Dialogue Between Security Staff Whilst in an Operational Environment

Some of the Challenges

- Creating Space for Automated Systems
- Reluctance for Change by Staff
- Engagement of Unions
- Engagement of Staff During Trials
- Early Engagement with Stakeholders, Architects, Builders During the Design Phase of a Terminal Development Project
- Raising CapEx for the Project
- Interaction with Airport IT
- Engagement of Local Maintenance Staff
- Selection of the Right Staff to Lead the Teams
- Selection of the Right Staff to Carry out Job Functions

Where This Has Worked

- Supplier Worked as Part of the Development Team
- Provided a Flexible design for Tray Handling System
- Engaged with the Stakeholders and their Agents; Provided Designs, Simulation and Modelling for Visualisation
- Engaged Trials Teams to Promote the Systems and Support Local Staff
- Supplier Provides or Engaged with Local Companies for Support
- Provided Management, Staff and Compliance Software; i.e.
 - SEMs, SmartARCs, SmartPredict, SmartRoster, SmartTutorial



What Is:

Mach-Secure®

A suite of Mach-Smart Products designed to increase security and efficiency for security checkpoint applications

What Is:

Mach-SEMS®

Security, Efficiency and Management System

provides the Business with real time Equipment Status, KPI's, and Passenger throughputs with powerful analytic tools and historical reports.

What Is:

Mach-Smart Products

MacDonald Humfrey registered Mach-Smart Products, Applications and Services

Inputs

- MachSecure® Products
 - SmartLane®
 - SmartView®
 - SmartGate®
 - SmartAccess® etc...
- Airport
 - AODB's
 - DCS's
 - SAC's etc...
- 3rd Party Interfaces



SEMS®

- Centralised Data Storage
 - Equipment & Process Events
 - Operator Actions & Logins
 - Training Data & Profiles
 - Process Parameters & Profiles
- Operational Services
 - Smart Product Interfaces
 - 3rd Party Interfaces



Outputs

- SEMS Clients
 - Business Information
 - Historical & Commercial Reports
 - Statistical Data
 - Supervisors
 - Status Overviews
 - Real Time KPI's & Alerts
 - Planning Tools
 - Equipment and Personnel Performance
 - IT/Engineering
 - Diagnostic Tools
 - Configuration
 - Reporting



- **SEMS**
 - Security Efficiency Management Systems
- **Mach-SmartLane**
 - OBS Automated Tray Return
- **Mach-SmartView**
 - Directive Search Facility
- **Mach-SmartView Matrix**
 - Remote Screening Directive Search Facility
- **Mach-SmartTutorial**
 - On the Job CBT Training Solution
- **Mach-SmartARCS**
 - Airport Regulatory Compliance System
- **Mach-SmartPupil**
 - Security Vigilance Monitoring System
- **Mach-SmartAccess**
 - Automated Boarding Pass Access Control
- **Mach-SmartGate**
 - Automated AMD Routing Solution
- **Mach-SmartSense**
 - Checkpoint Personnel & Asset Tracker
- **Mach-SmartRoster**
 - Intelligent / Dynamic Staff Roster System
- **Mach-SmartPredict**
 - Passenger & Equipment Resource Forecasting
- **Mach-SmartDrop**
 - Passenger Automated Check In Self Bag Drop
- **Mach-SmartSAC**
 - Sort Allocation Computer System
- **Mach-SmartBRS**
 - Baggage Reconciliation System

Mach-Secure Product Solutions

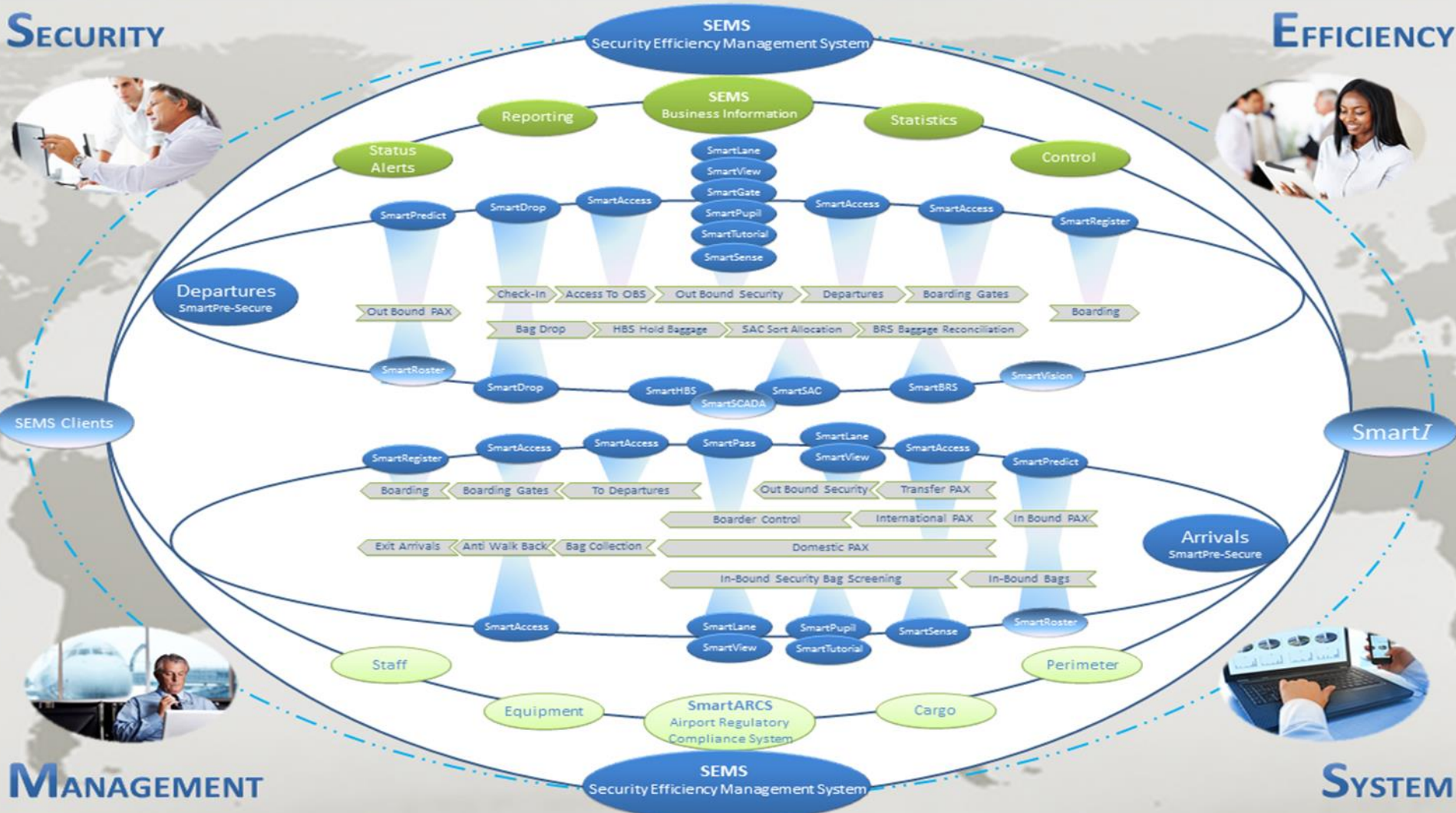
SECURITY

EFFICIENCY

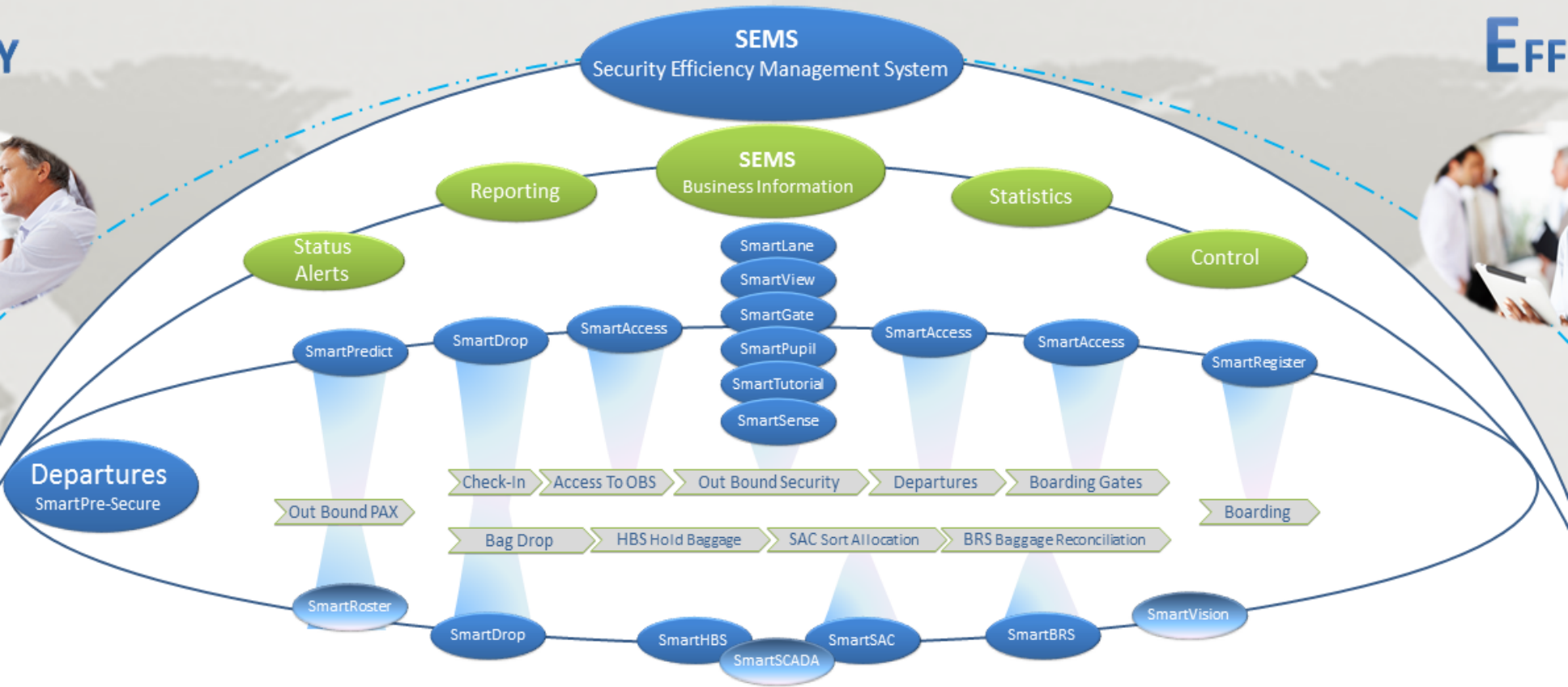


MANAGEMENT

SYSTEM



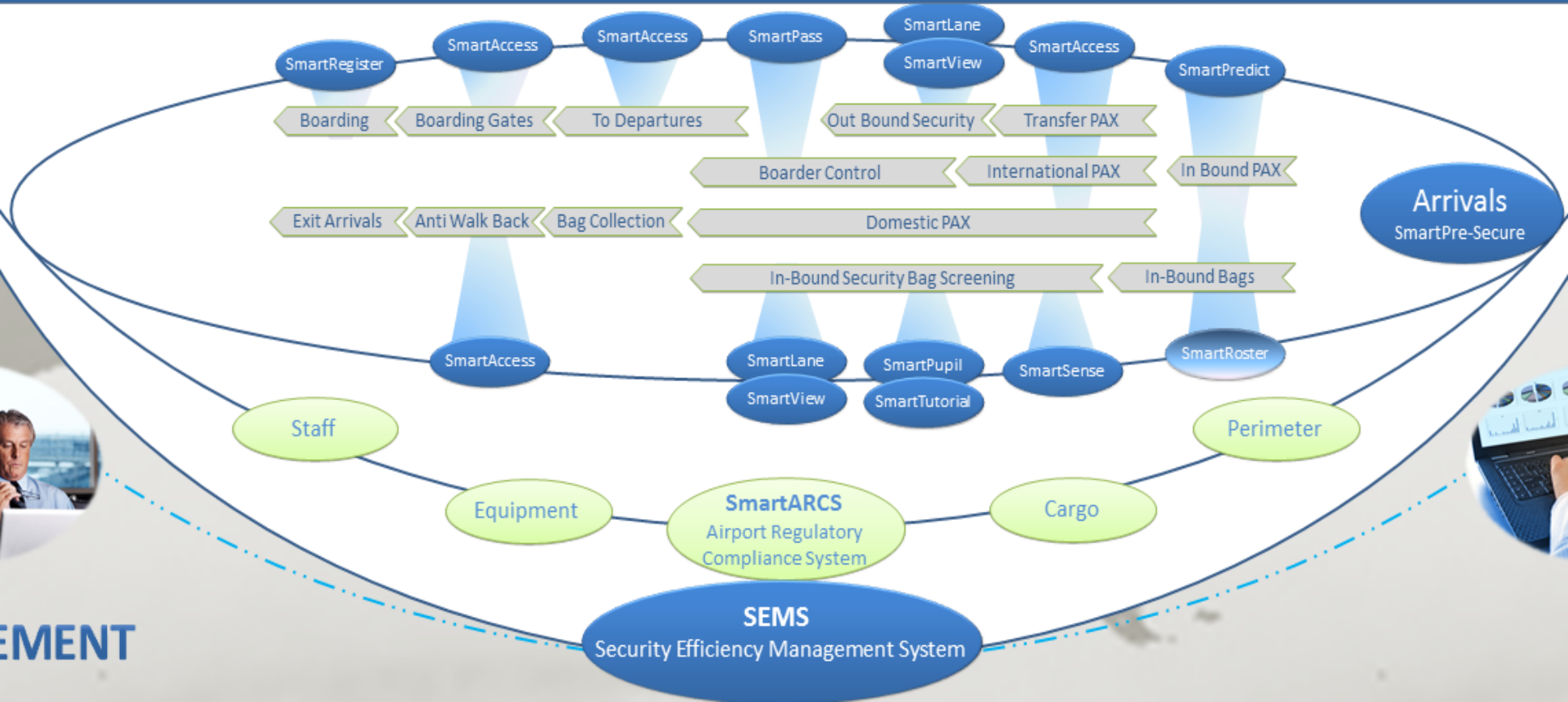
Mach-Secure Product Solutions



EFF



Mach-Secure Product Solutions

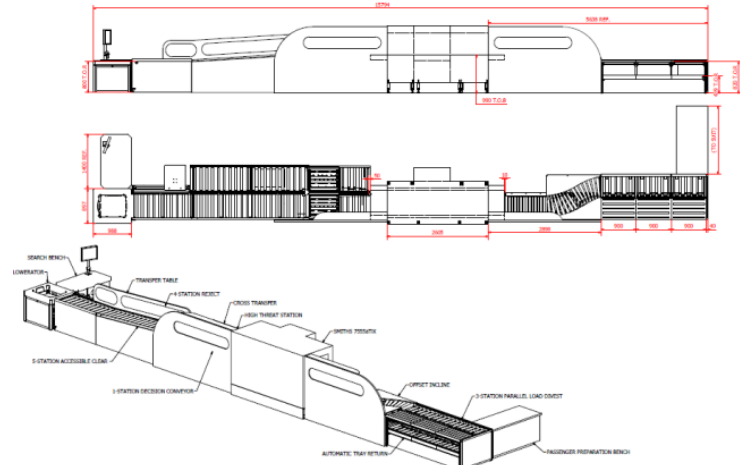
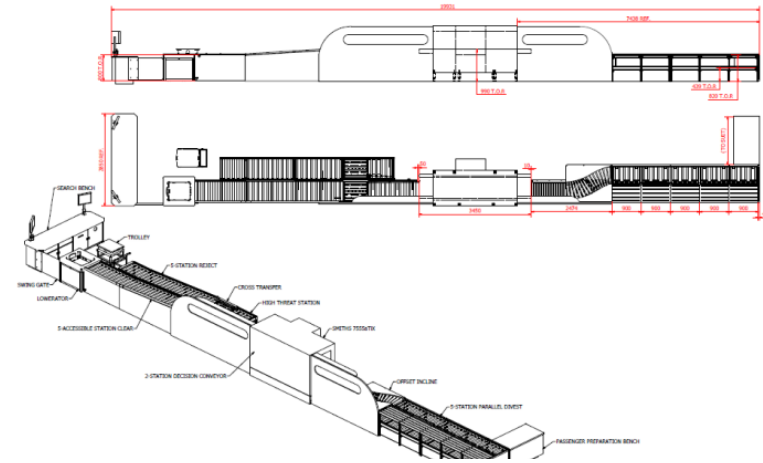


EMENT

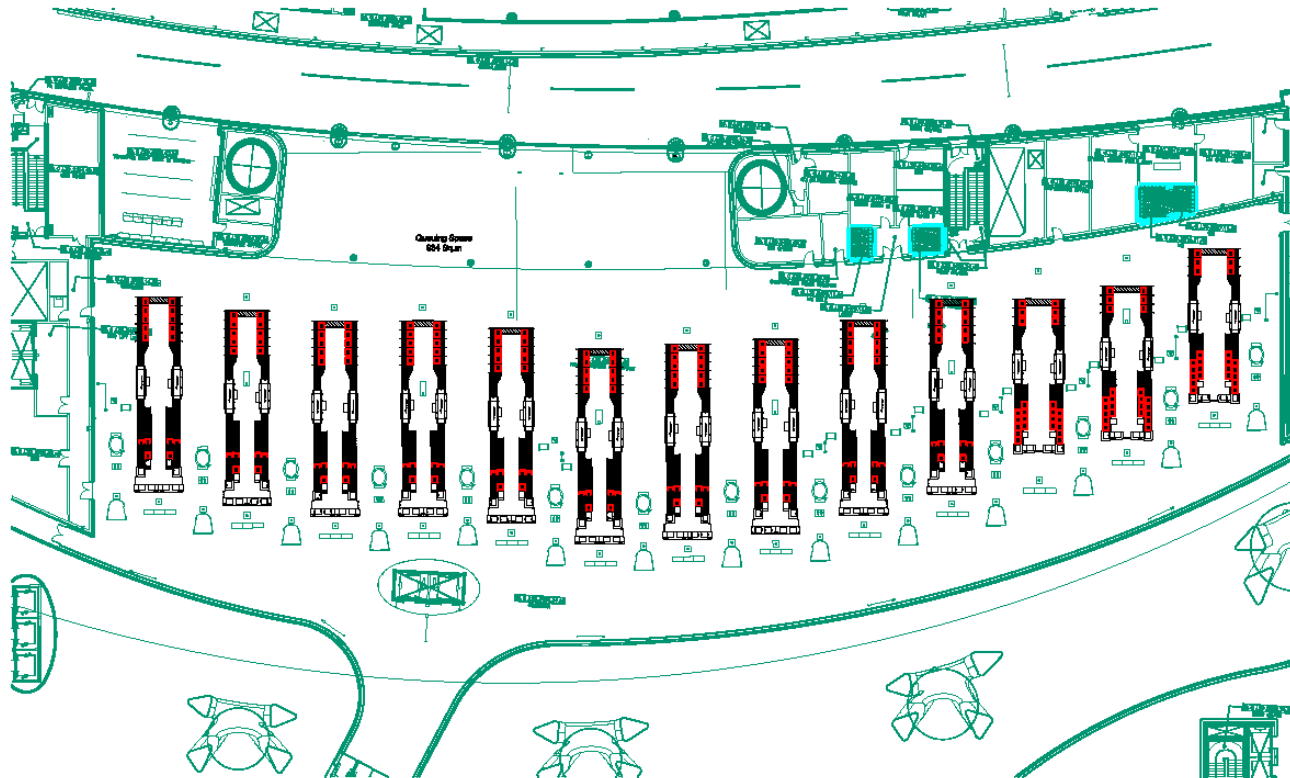
Planning for the Optimum Size

Experiment	Run Duration	Divest Stations	Amount Of Redress Stations	Amount Of Reject Stations	Percentage Of Rejects	Searchers Available	
Type 4	01:00:00	5	6	5	5	2	
Clear Trays	Reject Trays	Total Trays	Blocked By Clear	Blocked By Reject	Reversing	Running	Starved
571	34	605	3	0	4	69	24

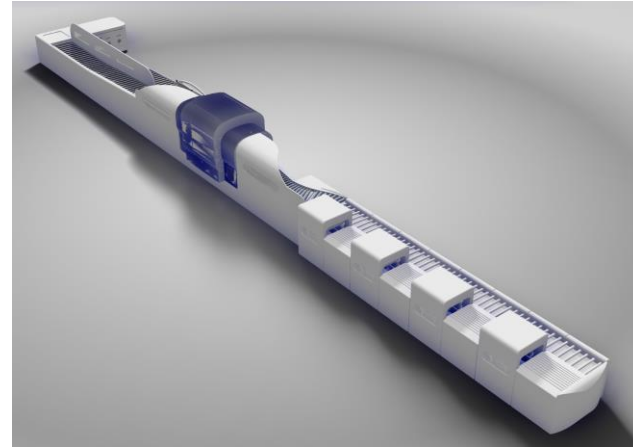
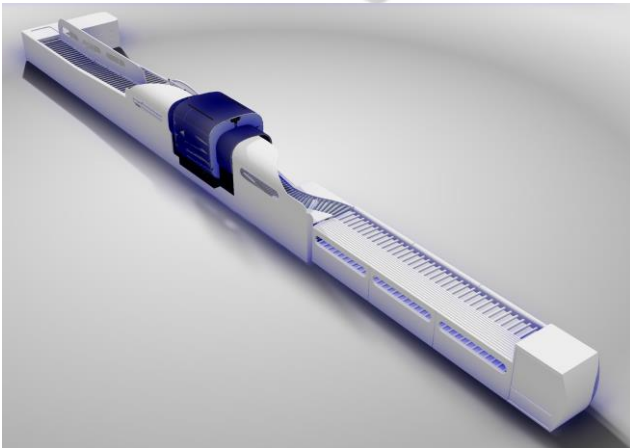
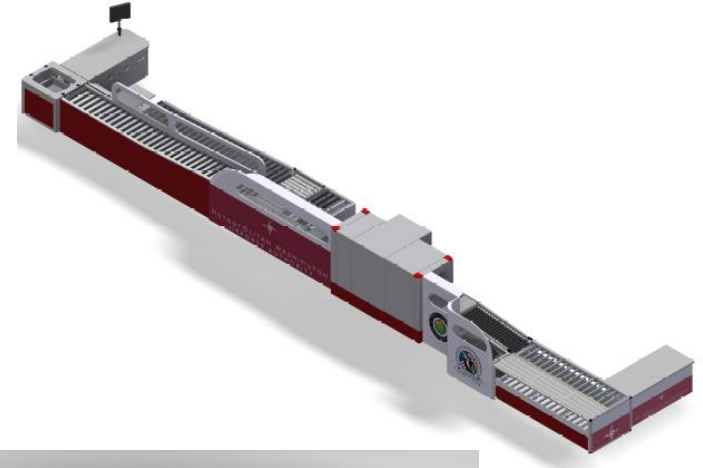
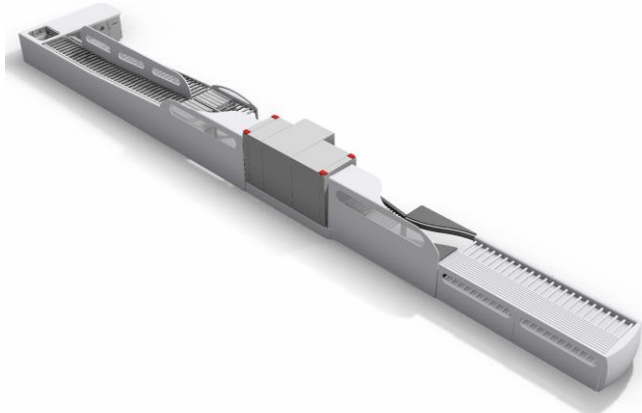
Experiment	Run Duration	Divest Stations	Amount Of Redress Stations	Amount Of Reject Stations	Percentage Of Rejects	Searchers Available	
Type 2C	01:00:00	3	6	4	5	2	
Clear Trays	Reject Trays	Total Trays	Blocked By Clear	Blocked By Reject	Reversing	Running	Starved
393	19	412	0	0	0	52	48



Planning for the Optimum Layout

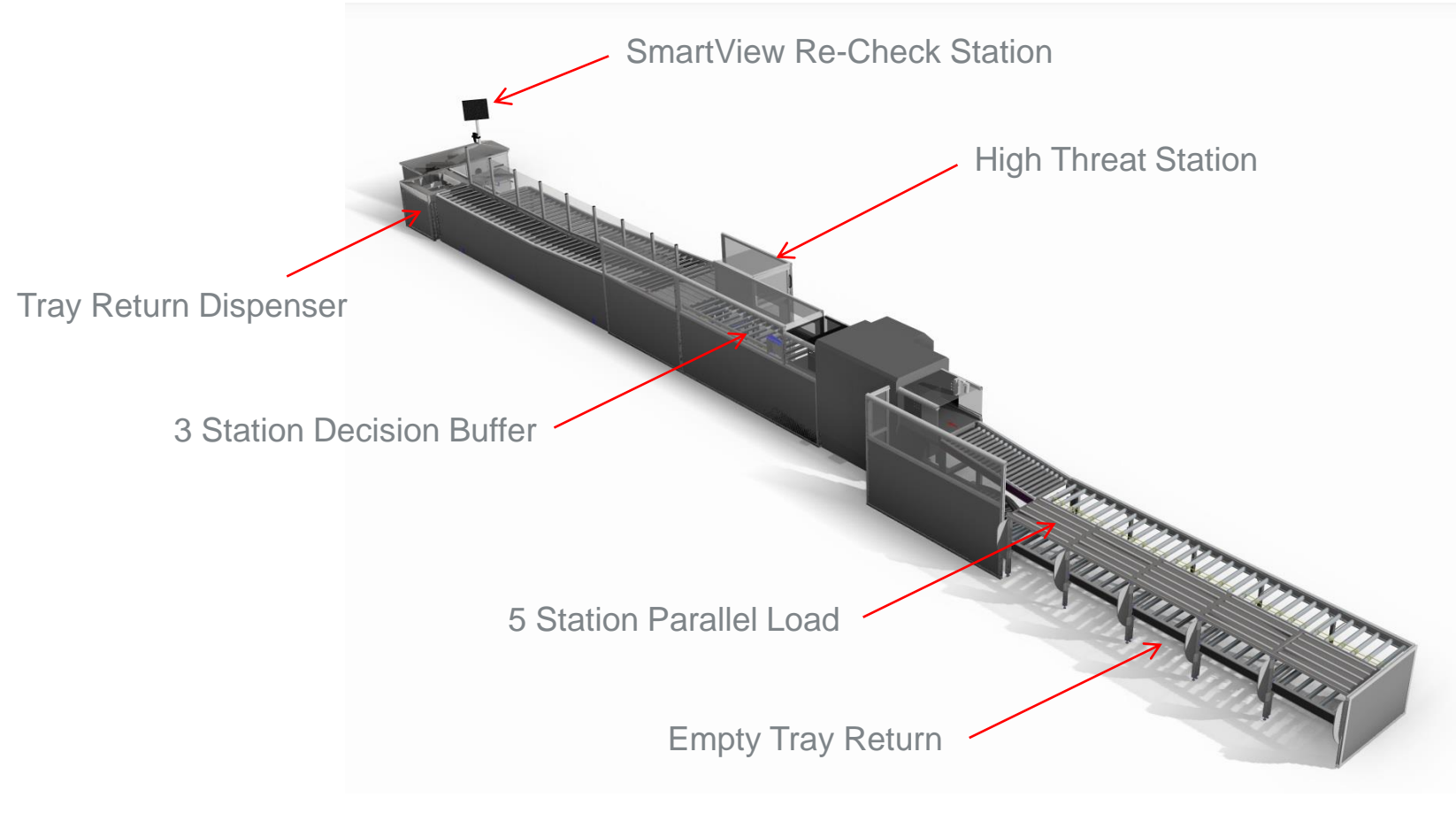


Mach-SmartLane® Options



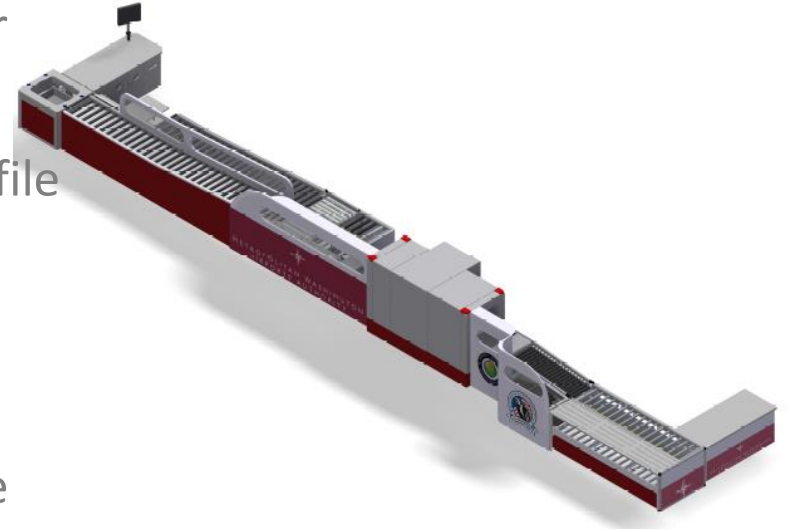


Mach-SmartLane® (Parallel Load + Matrix Buffer)



Parallel Load Advantages

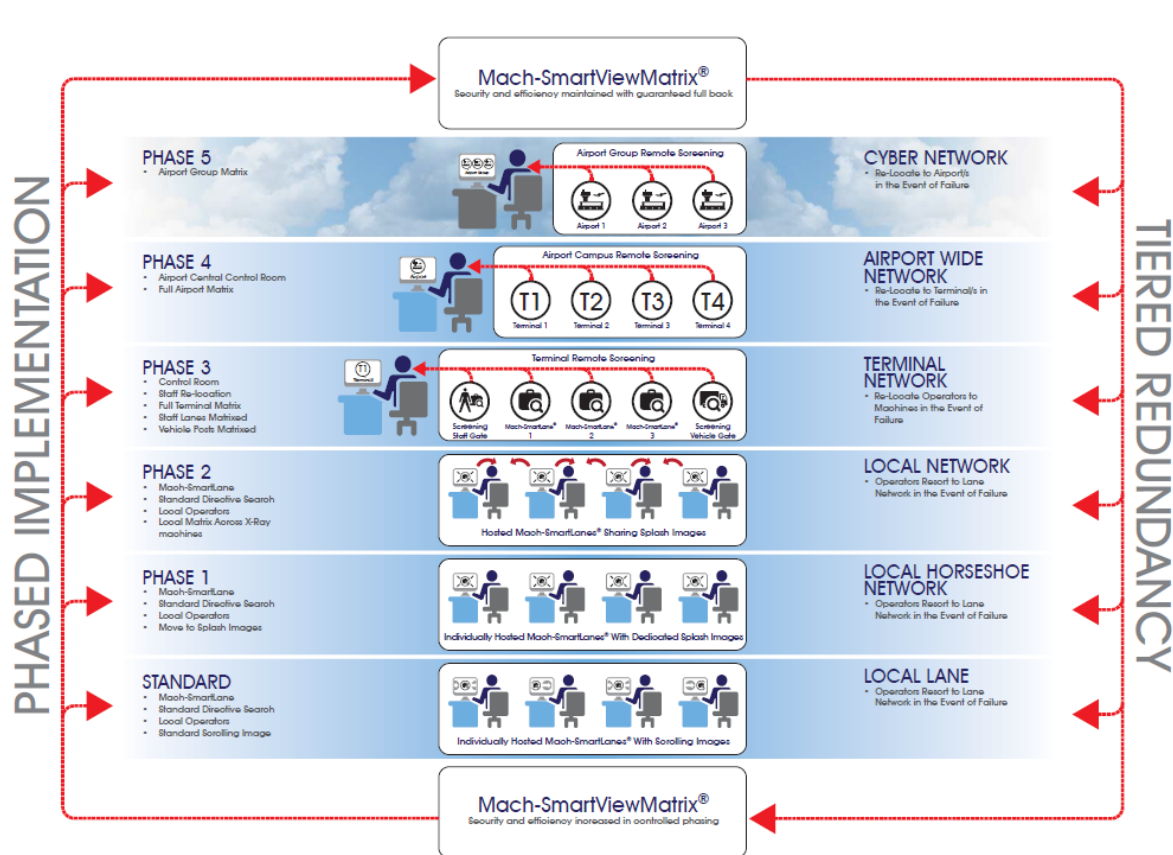
- System Flow not Inhibited by Slow Passenger
- Reduces Queues
- Variable Station Width to Suit Passenger Profile
- Easy Access of Trays by Passenger
- Quantity of Station to Suit Space Available
- Minimal Manual Handling for Staff
- Designed for Easy Cleaning and Maintenance
- Provides for Separation of Trays in to the X-ray
- Provides an Up Lift in Throughput by up to 30% on Serial / Inline Systems



- Multiple Airports Screening from a Single Location
- Multiple Terminals Screening from a Single Location
- Terminal Screening
 - Outbound Passengers
 - Staff Access
 - Vehicle Check-Point
- Completely Independent of X-Ray Machine Manufacturer
- Ability to Multiplex Different Machine Manufacturers on same Network
- No Recertification of the X-ray Machine Required



- Centralised Control Room Benefits
 - Enhanced Security
 - Improved Compliance
 - Reduce Overall Operational Costs
 - Eliminate Inefficiencies
 - Improve Staff Performance



Contents of the above is Confidential and the Copyright of MacDonald Humfrey (Automation) Ltd. and as such must not be Disclosed, Loaned or Copied without written Permission.

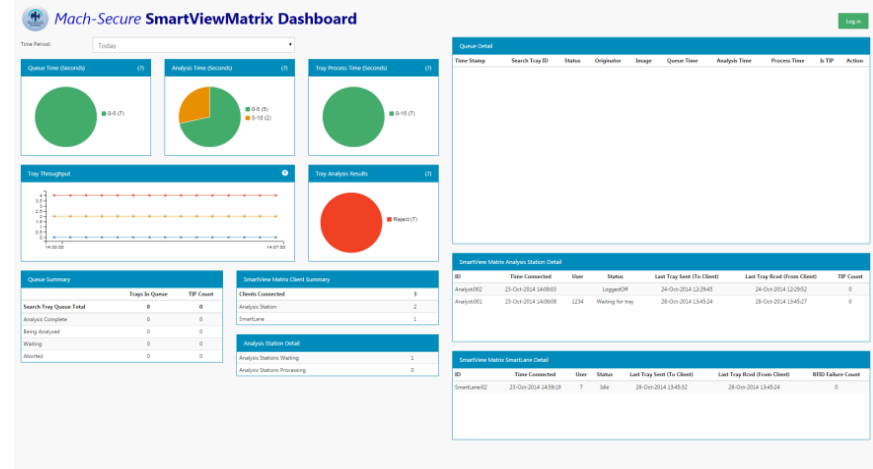
- Personnel
 - Improved Screening Performance; No Distractions or Noise
 - Personnel Dedicated to Screening; Best at the Job Role
 - Using dedicated Screeners Reduces Rotation Time
 - Screeners can be Located Landside Reducing Time for staff to get their Workplace
 - No Team Pressure - No Lane / Personnel Correlation
 - Option to Distribute Complex Images to Advance Screeners



- System Enhancements
 - Load Sharing of Images
 - Splash Image
 - Reduced Tray Separation
 - Improved Screening Conditions
 - Automatic Reject of Tray after Configured Screening Time
 - Automatic Rejection of Trays for Regulatory Test
 - Improved Distribution of TIP Images
 - No Analysing of TIP post Result
 - No Stopping of X-ray Belt
 - No Unnecessary Communications between Staff



- Visualisation
 - Integrated in to SEMs for...
 - RAG Dashboards
 - KPI Reporting Dashboards
 - Real Time Statically Data
 - Real Time Reporting; Personnel Performance, Equipment Performance, Throughput Data, Threat Data, Test Data, Airline Data





Matrix Screening

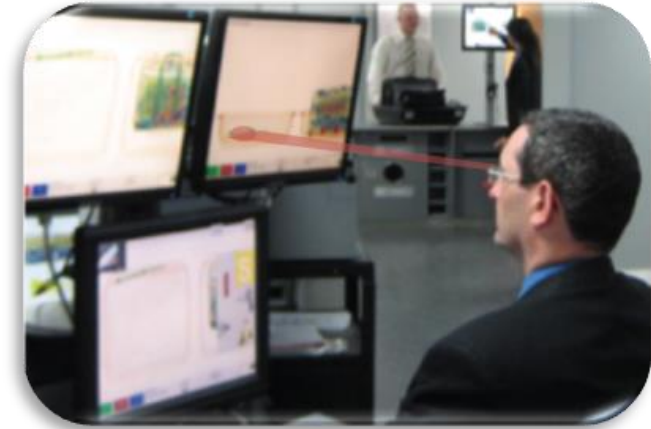
- Actual System Results

- Tray 712mm, Gap 200mm, Conveyor Speed 200ms
- Tray Process Time =
 $(712 + 200) / 200 = 4.56 \text{ sec}$
- Max Throughput =
 $3600 / 4.56 = 789$
- Throughput Recorded
Current Best = 742
Current Average = 680

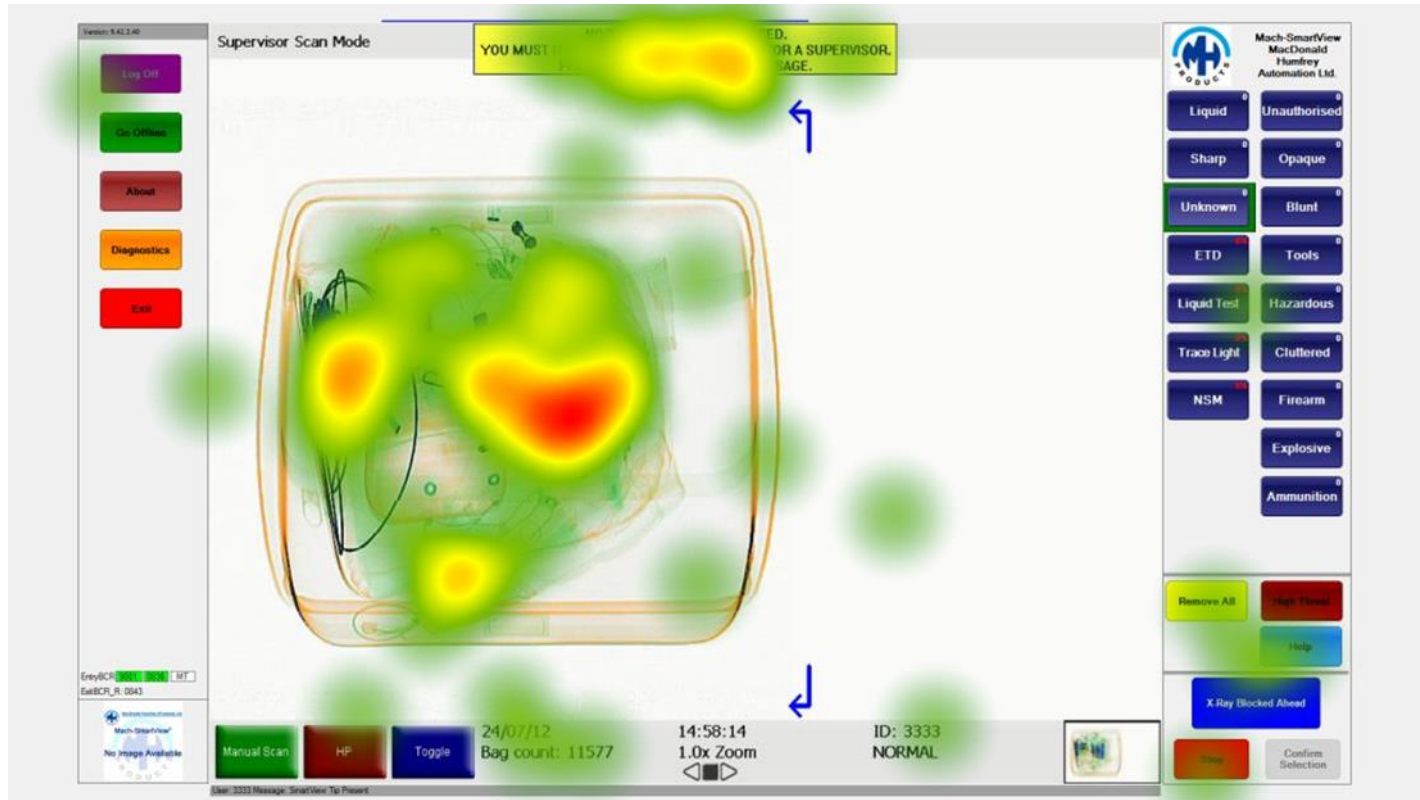
- Theoretical US Throughput

- Tray 712mm, Gap 200mm, Conveyor Speed **240ms**
- Tray Process Time =
 $(712 + 200) / \mathbf{240} = 3.80 \text{ sec}$
- Max Throughput =
 $3600 / 3.80 = 947 \text{ (Increase of 20\%)}$
- Possible Throughput
Current Best = $742 * 20\% = \mathbf{890}$
Current Average = $680 * 20\% = \mathbf{816}$

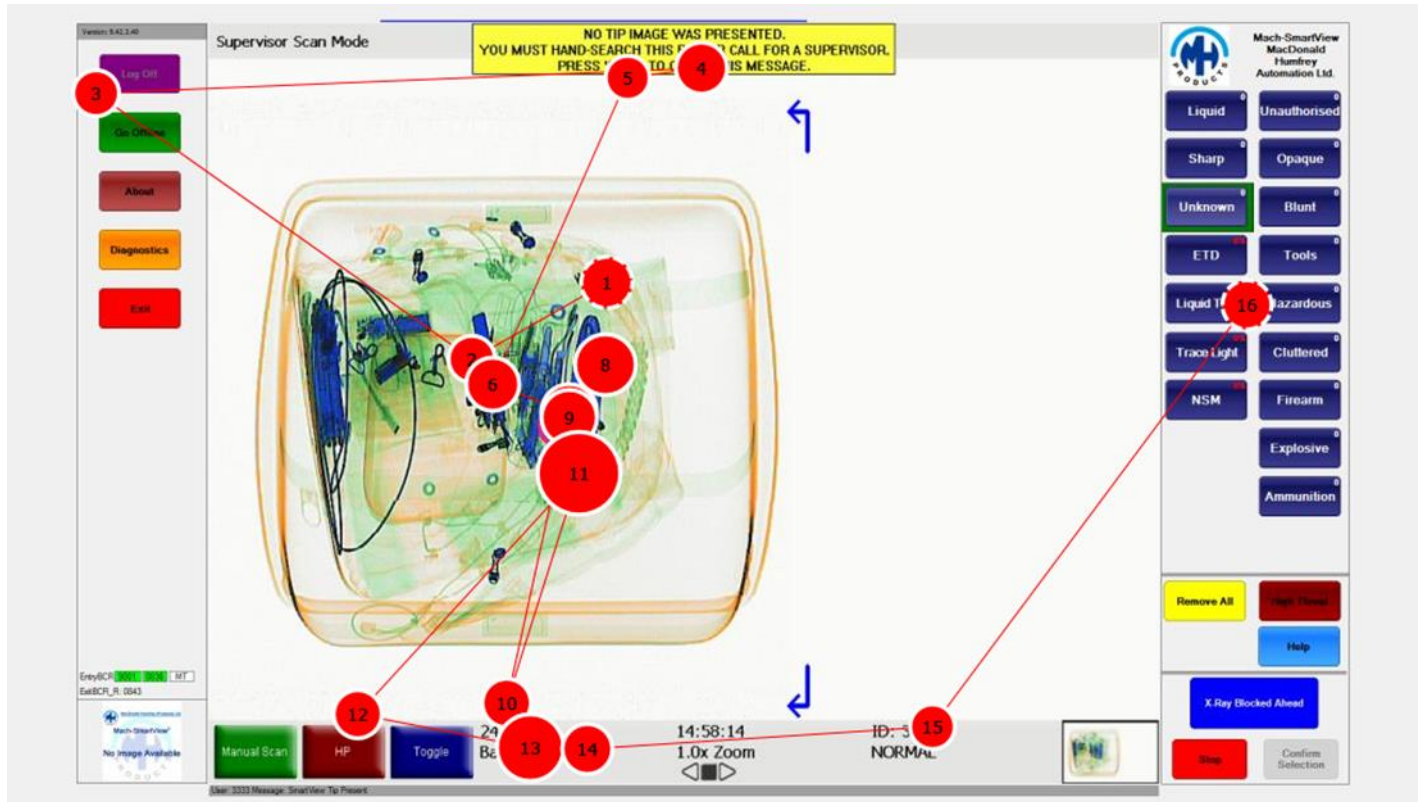
- Mach-SmartPupil®
 - Vigilance Monitoring
 - Eye Tracking
 - Tiredness/Awareness
 - Training Feedback
 - High Security



- Dwell Time Heat Map



- Sequential Gaze Plot – Partial Tray Content Coverage



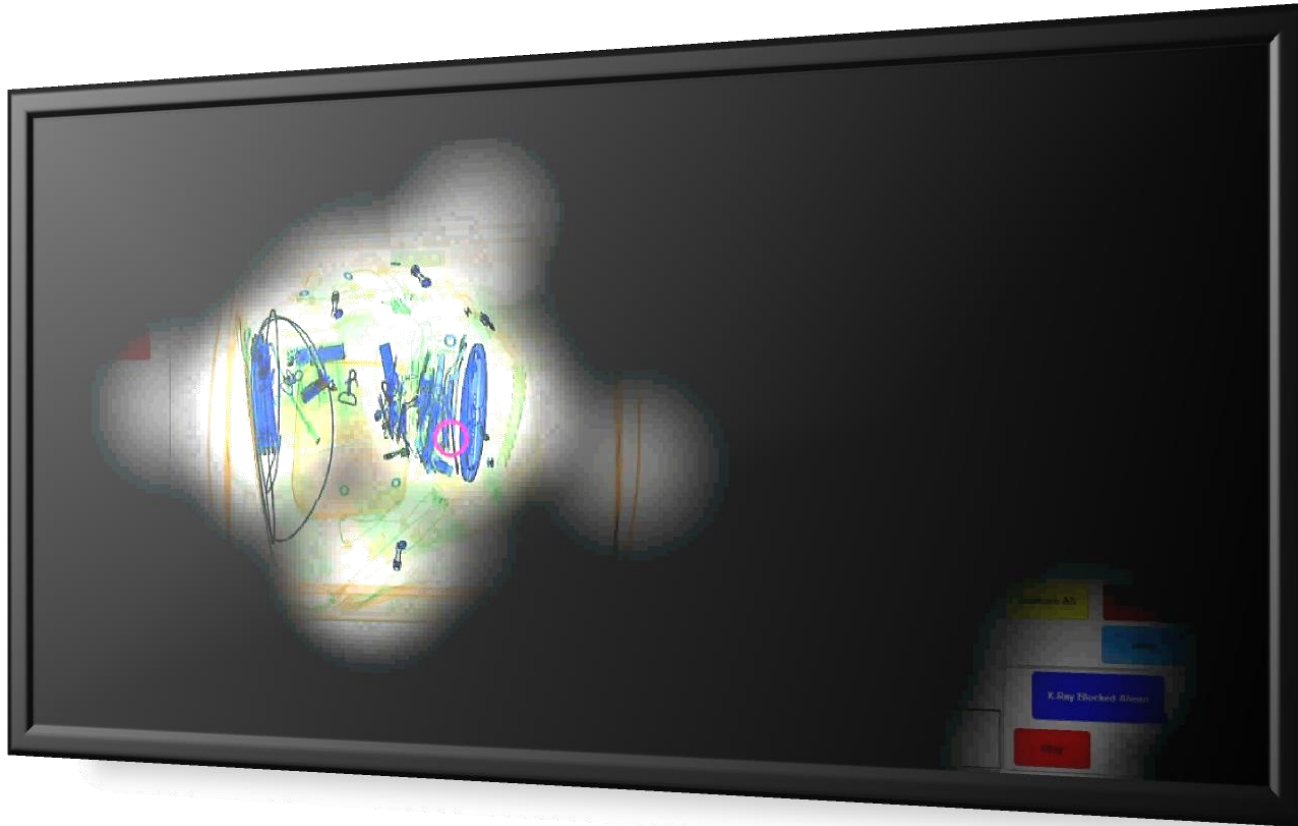
- Opacity/Torch Gaze – Partial Tray Content Coverage



- Opacity/Torch Gaze – Partial Tray Content Coverage Playback



- Opacity/Torch Gaze – Full Tray Content Coverage



- Opacity/Torch Gaze – Full Tray Content Coverage Playback





Summary

- Automation is a Proven Solution Which will Help Resolve Airports Problems
- Automation is not Just a Tray Handling System; Management Information and Reporting Tools are Important to the Overall Success
- The Introduction of Automation Comes with Challenges
- A lot of Airports are willing to Share Their Results
- Lean Manufacturing Processes will Aid the Implementation
- Partner Suppliers to Provide Technical Knowhow and Long Term Support
- Engage Early with all Parties
- Develop a Long Term Vision with a Stepped Integration Plan
- Consider All Opportunities as Small Changes Often Results in Big Wins

Thank You

Questions & Answers