



Single-exposure materials classification for portable threat detection

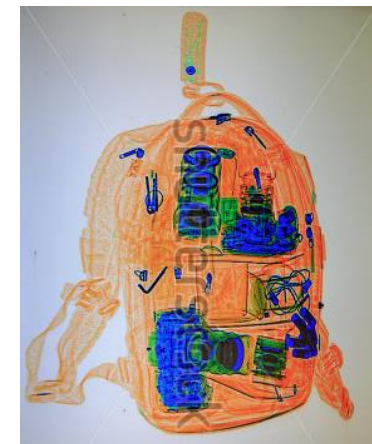
Tamzin Lafford, PhD

t.lafford@ibexinnovations.co.uk, www.ibexinnovations.co.uk

16th May 2018

What and how?

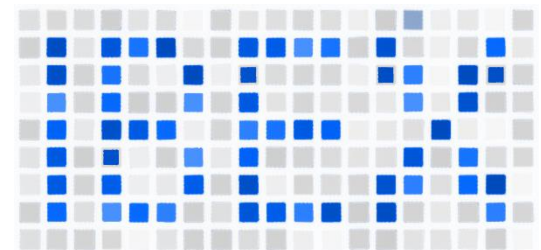
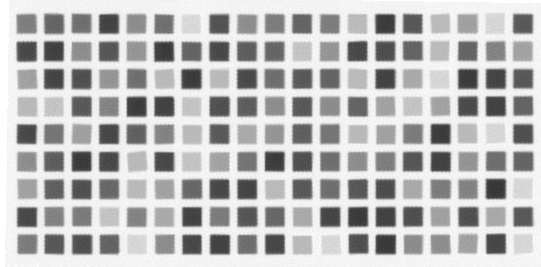
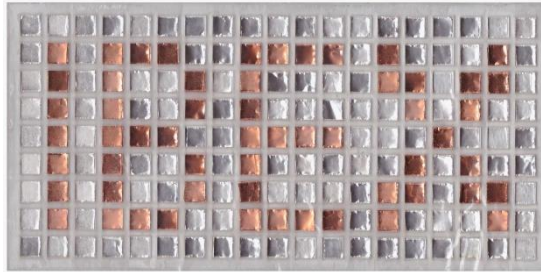
- Portable, practical, field-deployable X-ray security inspection system
- Effective materials classification in a single exposure
- IBEX materials classification technology
- Simple, fast, materials classification and absorption contrast image every time in a single exposure



Illustrative images from the internet



The issue and the IBEX solution

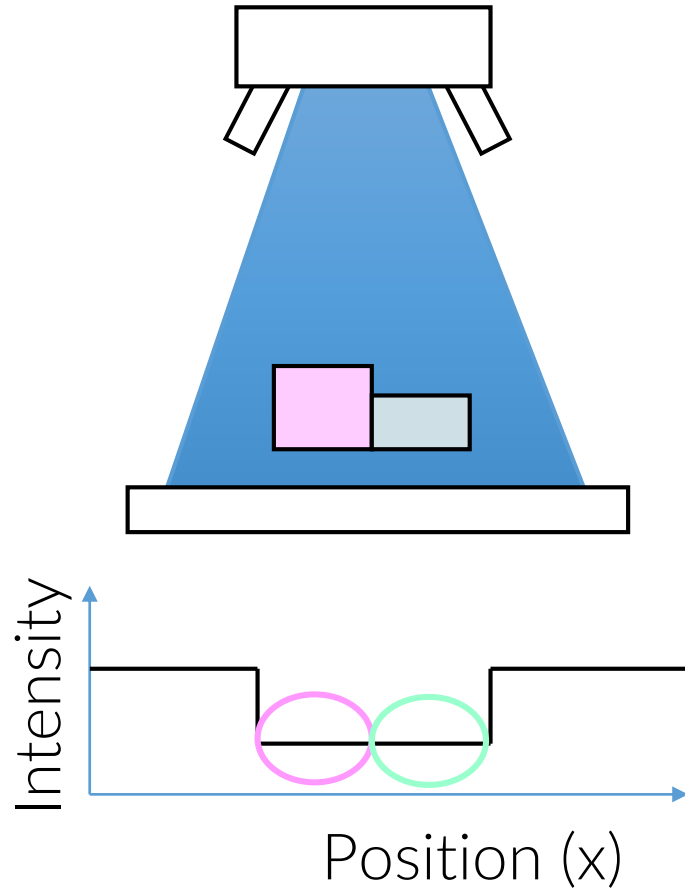


- Conventional X-ray absorption imaging gives no materials discrimination
- Dual energy or spectroscopic techniques require multiple scans or multiple sources or multiple/ spectroscopic detectors
- IBEX technology delivers materials classification using a *single sample exposure at a single kV_p using a single, conventional detector* (e.g. silicon flat panel...)
- Faster results more simply



IBEX MAP technology

Conventional X-ray System

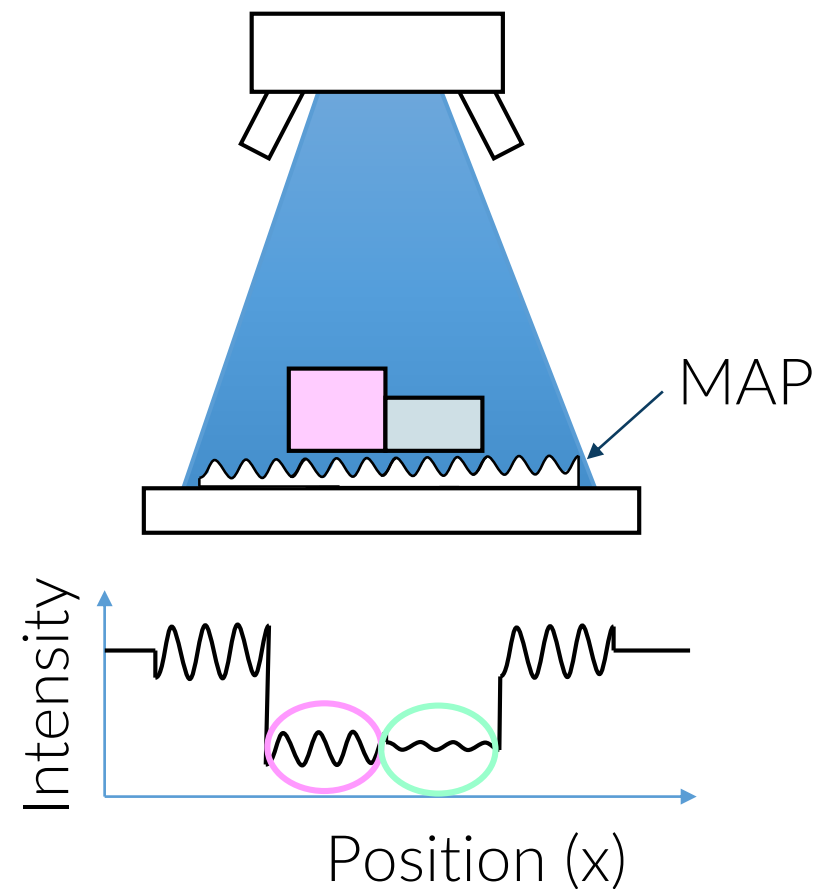


Source

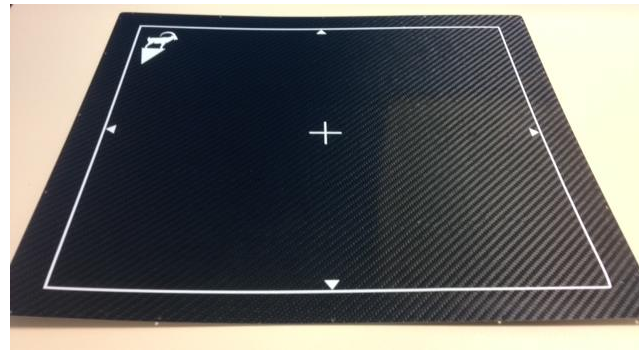
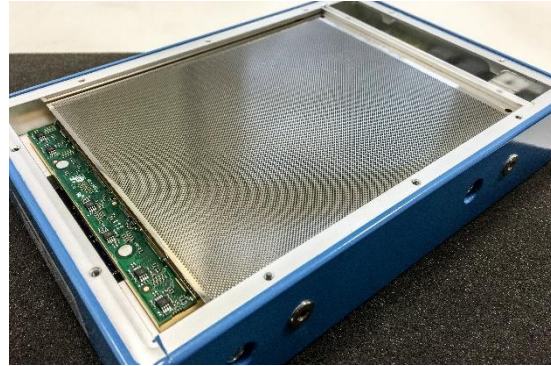
Sample

Detector

With MAP



IBEX MAP (Multi-Absorption Plate)



- MAP: structured filter in front of detector
- May be incorporated into detector cover-plate



Illustration only

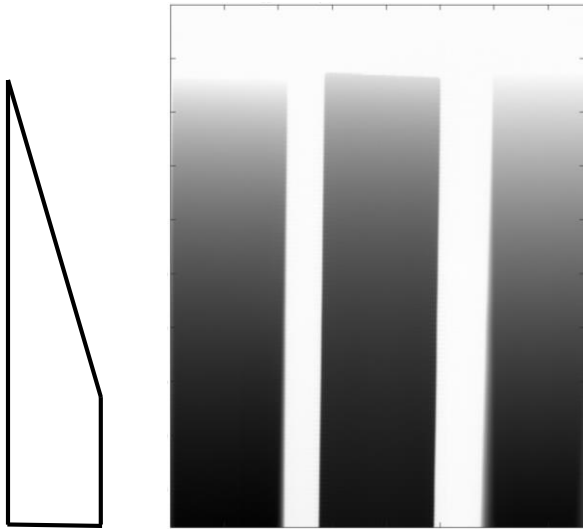
Multiple patents worldwide

<http://www.ibexinnovations.co.uk/technology/patents/39>

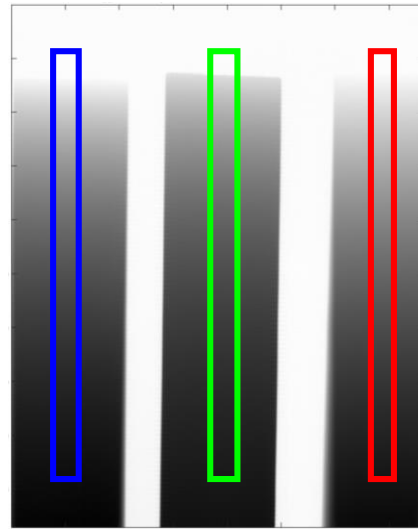


IBEX MAP technology and analysis in action

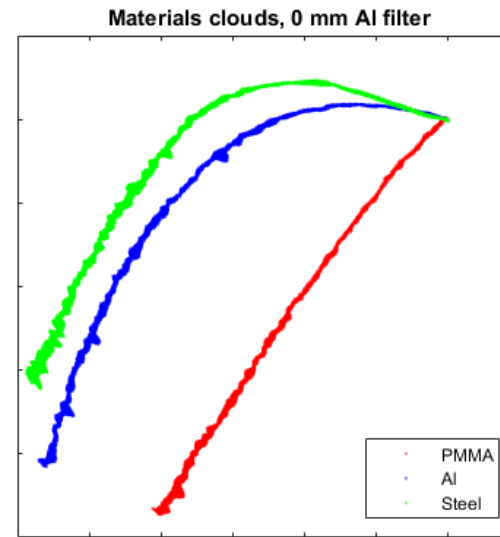
Conventional X-ray absorption does not tell materials apart



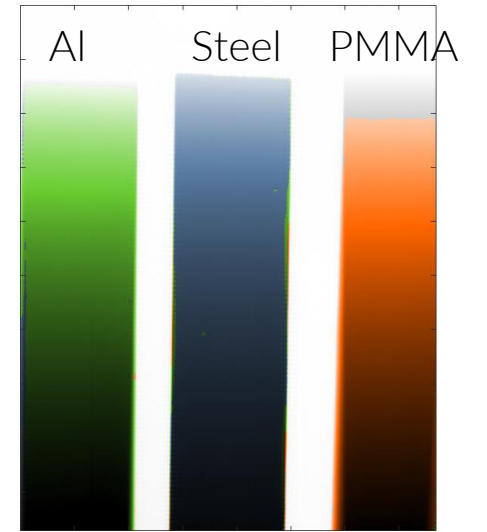
Train the system - select regions of interest (MAP present)



→ Generate "materials clouds" in IBEX "materials space"



IBEX technology classifies materials

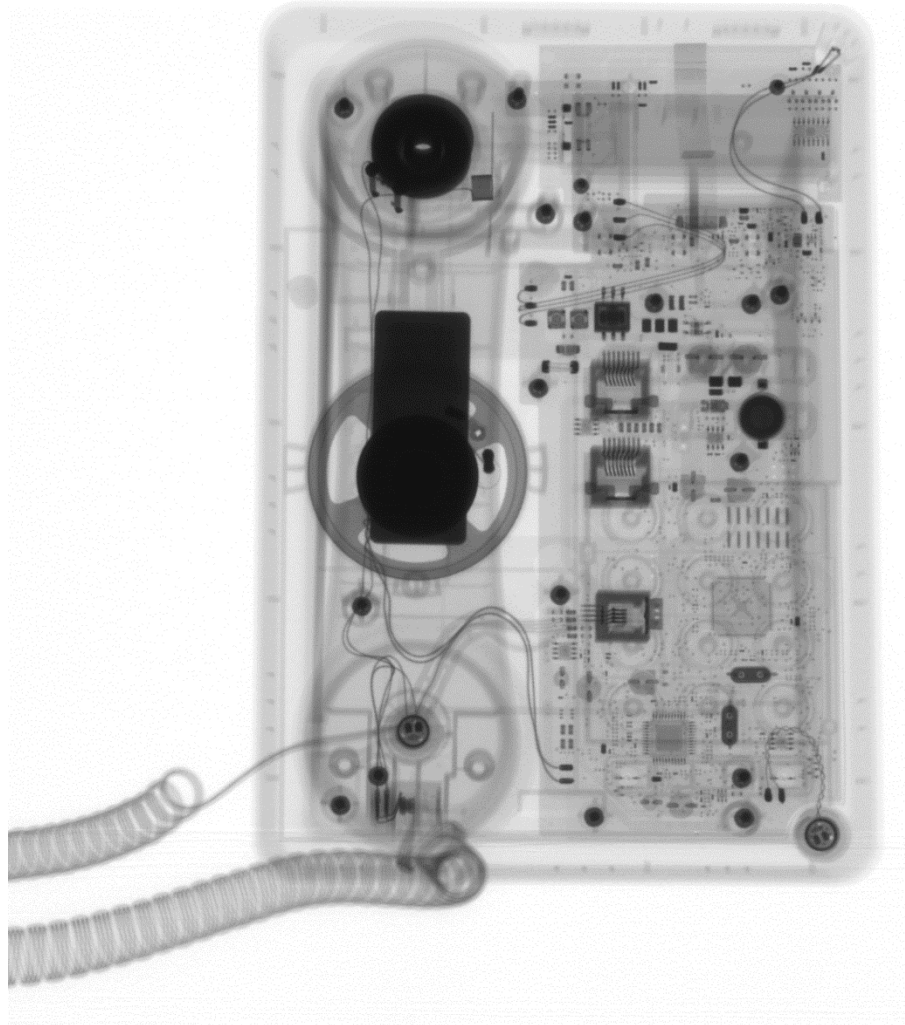


Apply "classification limits": do not classify where there is uncertainty

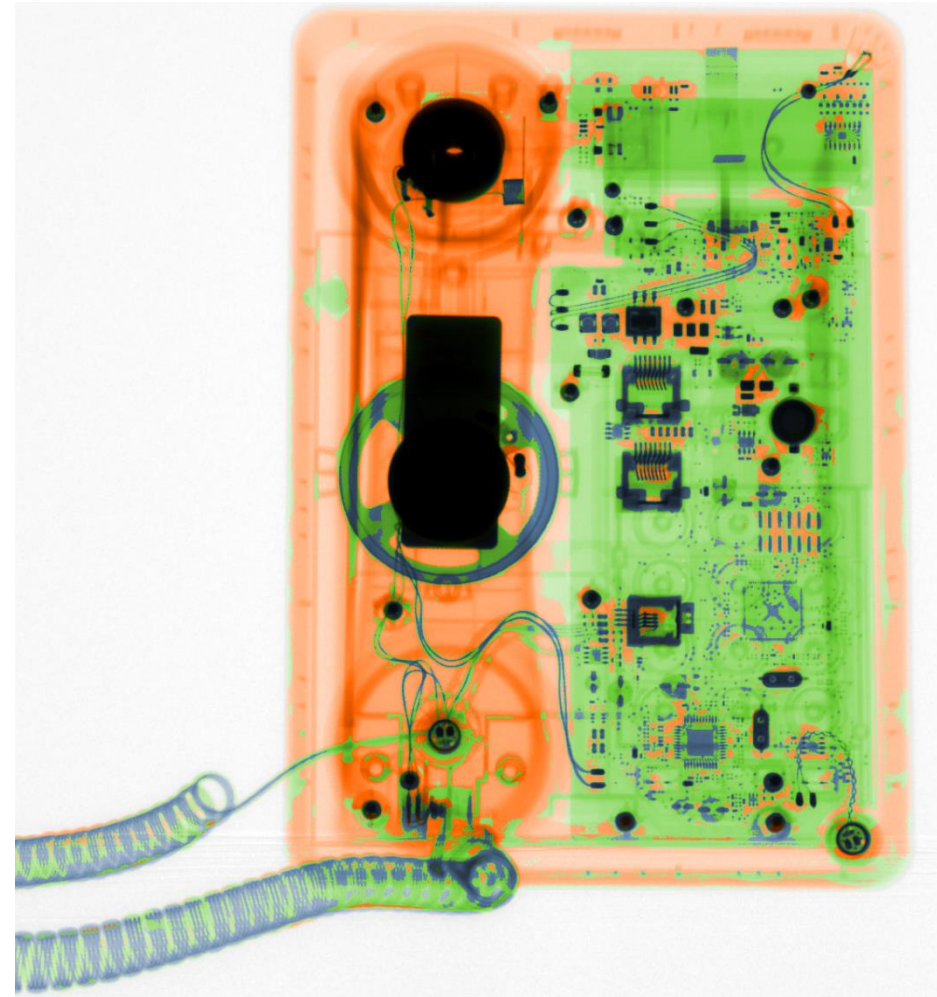


Example results in the security domain

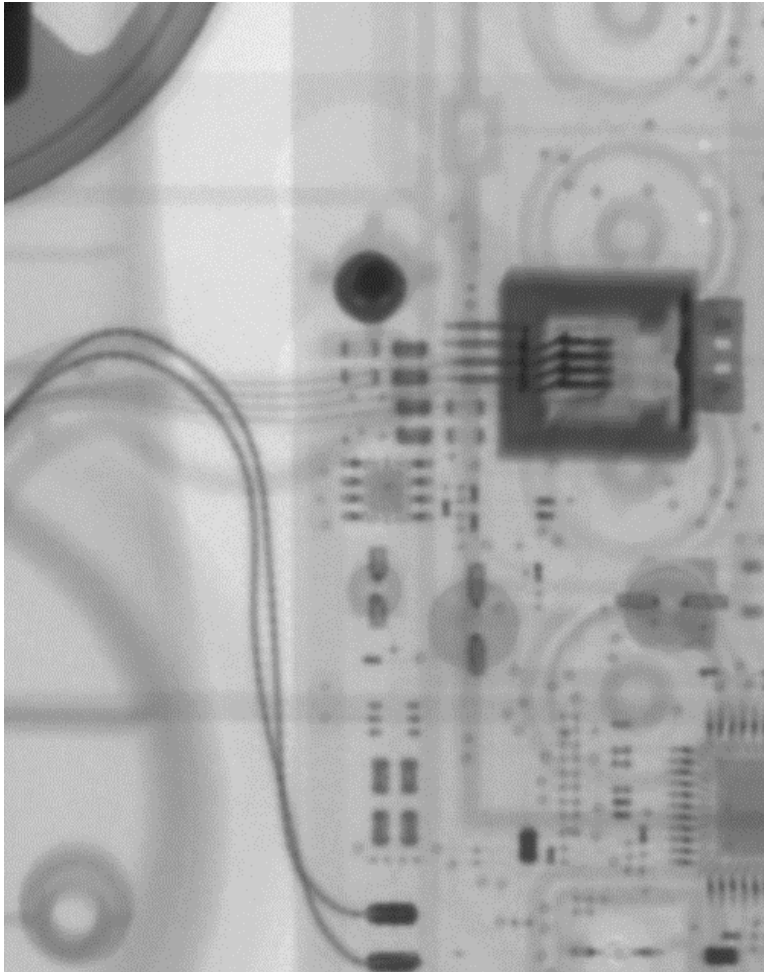
MAP-stripped absorption contrast image



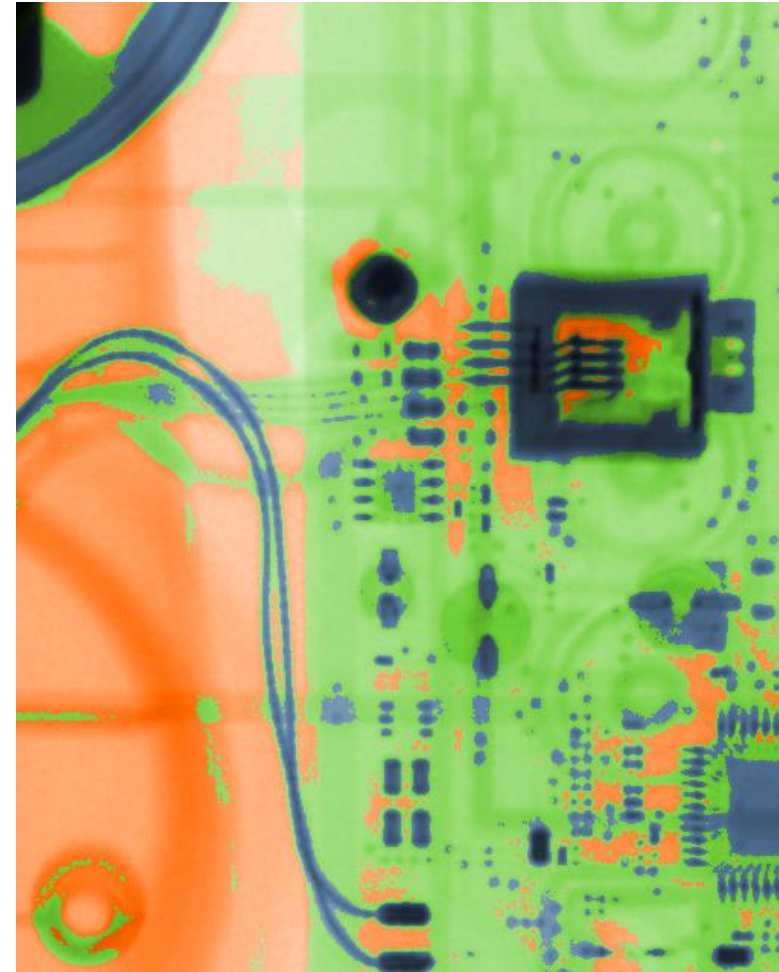
Materials classified overlay image



Zoom in



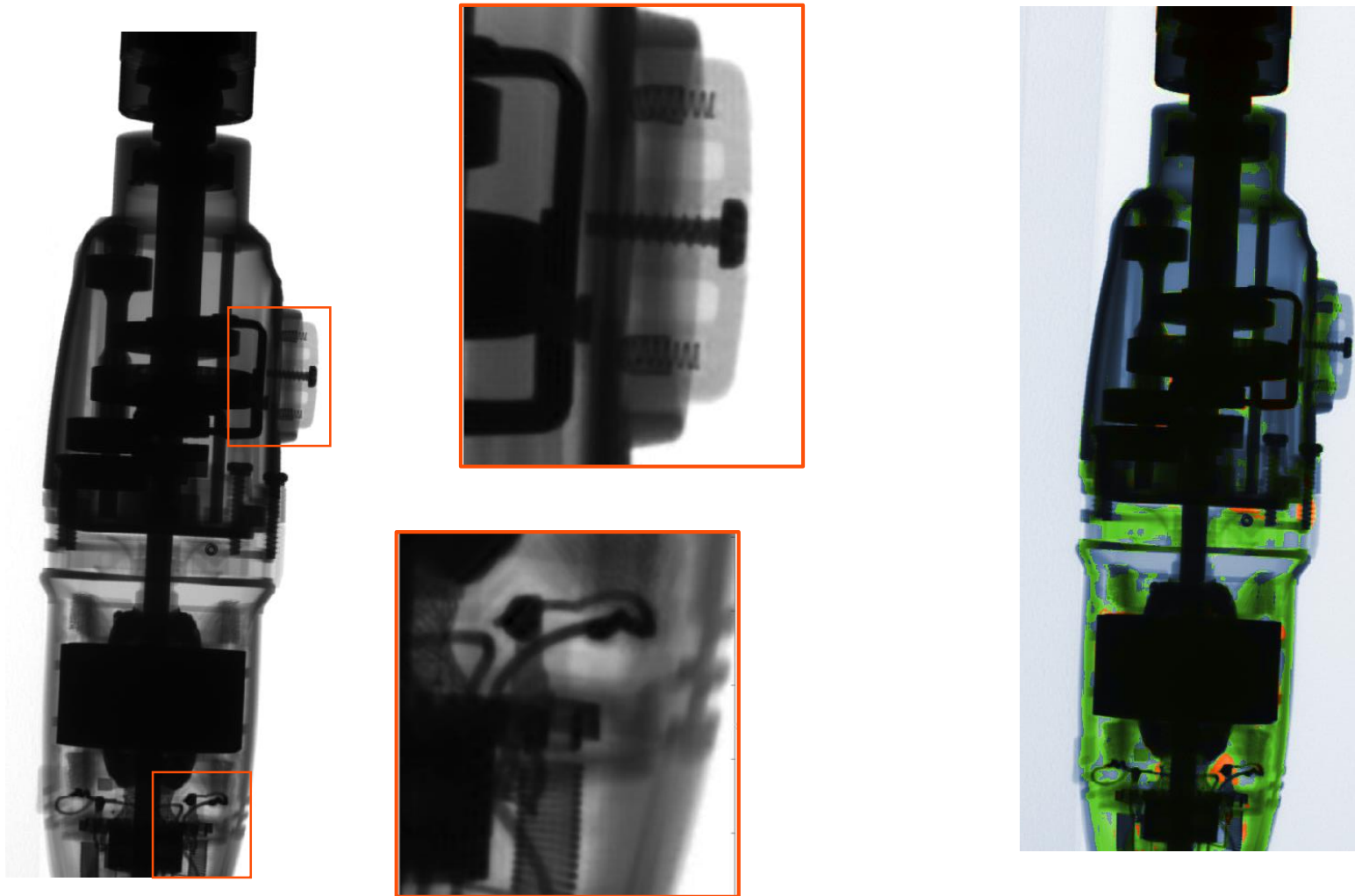
MAP-stripped absorption contrast



Materials classified overlay



Drill

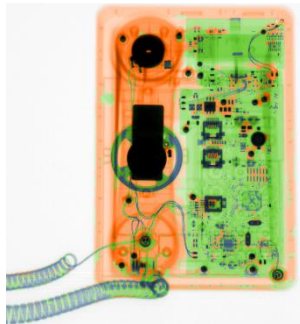
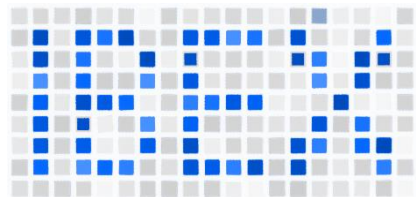
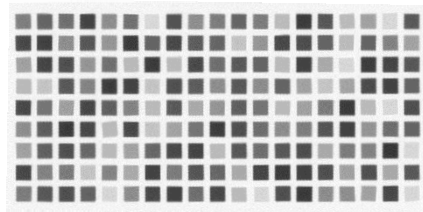
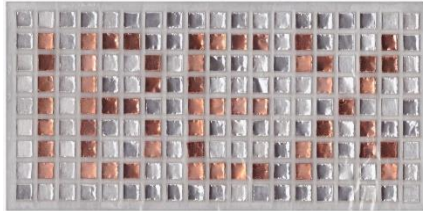


MAP-stripped absorption contrast

Materials classified overlay



Summary



- IBEX Trueview™ technology delivers materials classification
 - Single sample exposure
 - Single kV_p
 - Single, conventional detector fitted with MAP
 - Every scan
- High resolution conventional absorption contrast image also produced
 - Shadow of MAP stripped from data
→ clean absorption contrast image





See what's really there with

IBEX Trueview™

IBEX Innovations Ltd.

Explorer 2, NETPark,
Sedgefield, TS21 3FF
UK

Registered in England and Wales: 07208355
enquiries@ibexinnovations.co.uk
+44 (0) 1740 617770

www.ibexinnovations.co.uk

© 2018 IBEX
Innovations Ltd.

Slide 11





Supporting back-up slides

Who are IBEX Innovations?

- High-tech start-up
 - 2010; venture capital funding 2011; InnovateUK and Horizon2020 grant funding
- Founded on patented MAP (multi-absorption plate) technology
- 19 personnel, of whom 7 have PhDs; another 2 studying for PhDs
- On the North East Technology Park (NETPark) in County Durham, UK
- Trueview™ trademark
- www.ibexinnovations.co.uk



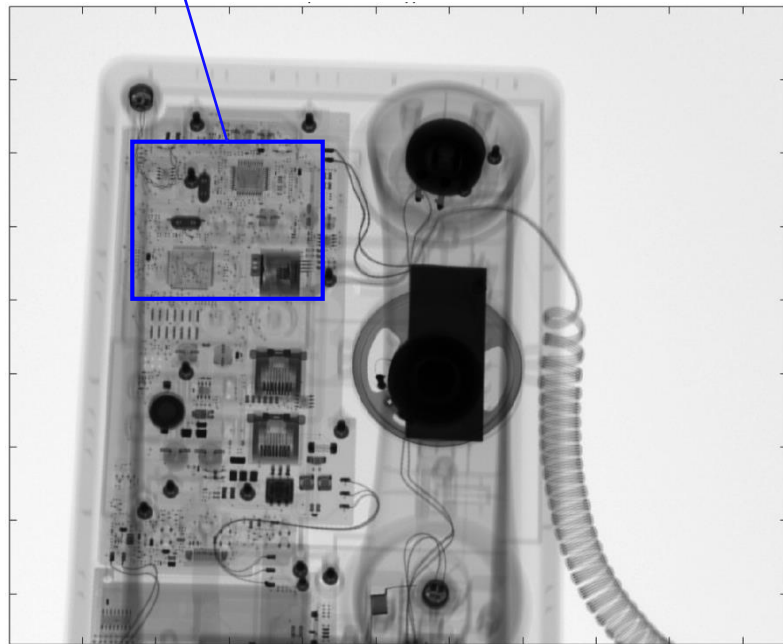
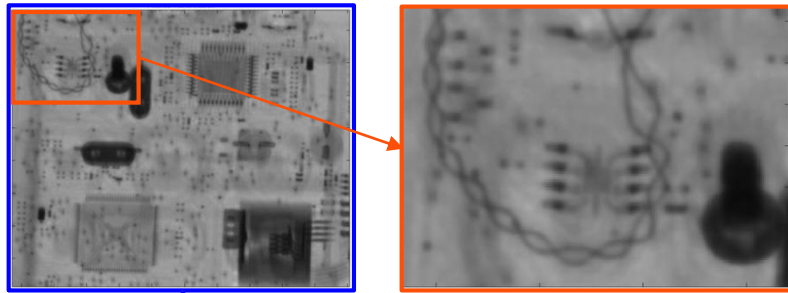
Patents

- For up-to-date patent information, see www.ibexinnovations.co.uk, <http://www.ibexinnovations.co.uk/technology/patents/39>
- US9519068, US9784851
- GB2498615, GB2532634, GB2532897, GB2533233
- Taiwan I586991
- Japan 6196227
- Other patents pending



Desk telephone

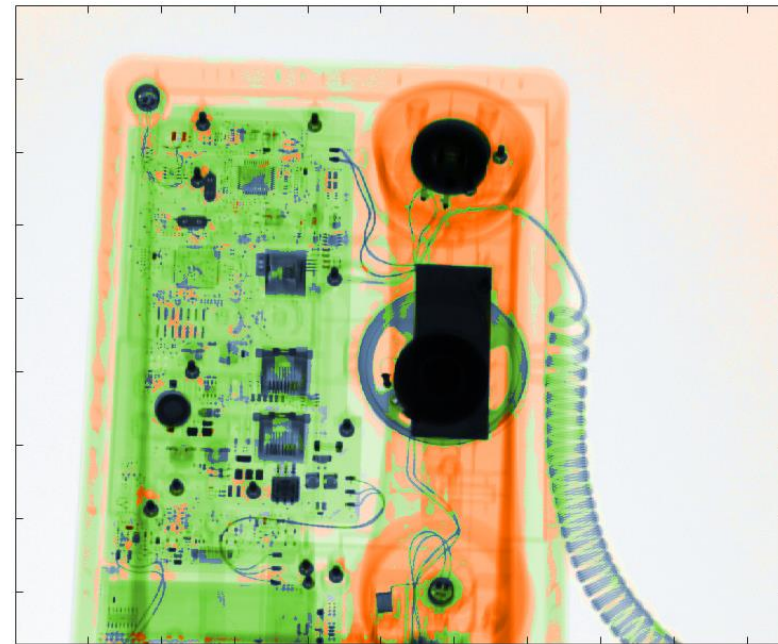
IBEX retains high resolution absorption contrast images



Absorption Contrast

- 150 kV pulsed source
- 139 μm detector pixel size

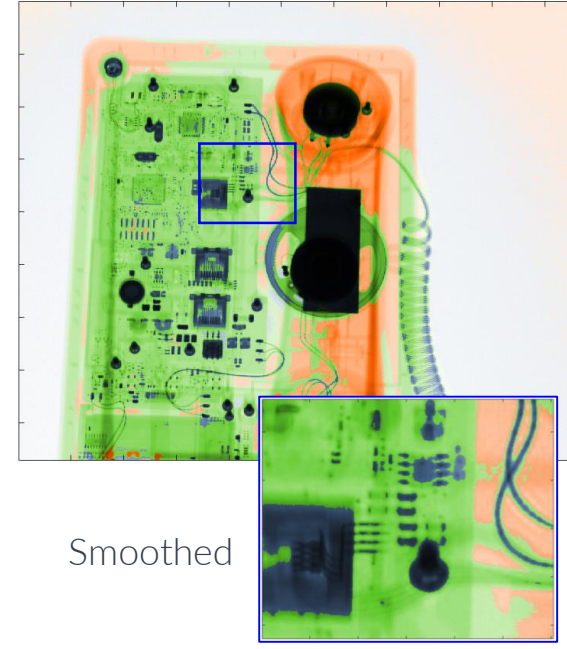
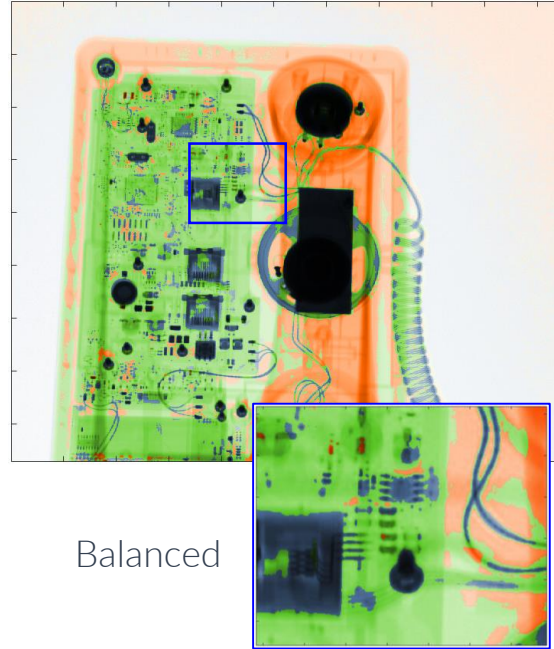
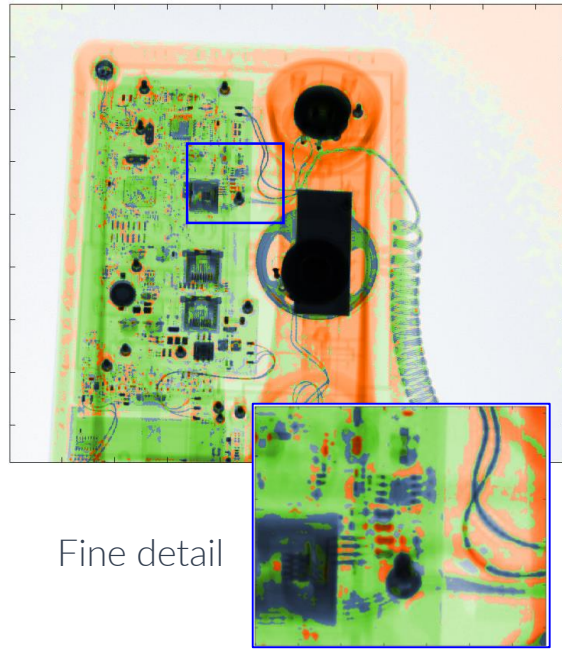
Materials classification is overlaid onto the high resolution image



IBEX Materials Classification



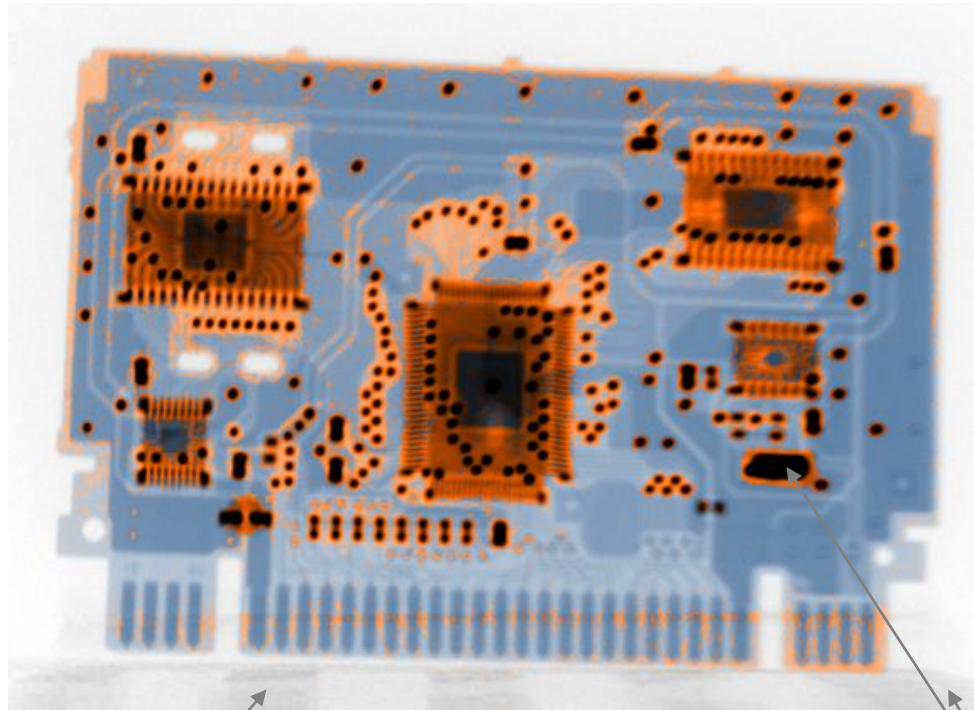
Variable presentation of materials classification



- Materials sensitivity can be adjusted by the user after data acquisition
 - Optimise appearance of classified image
 - Highlight specific areas of interest
 - Resolution of absorption contrast image unaffected



PCB



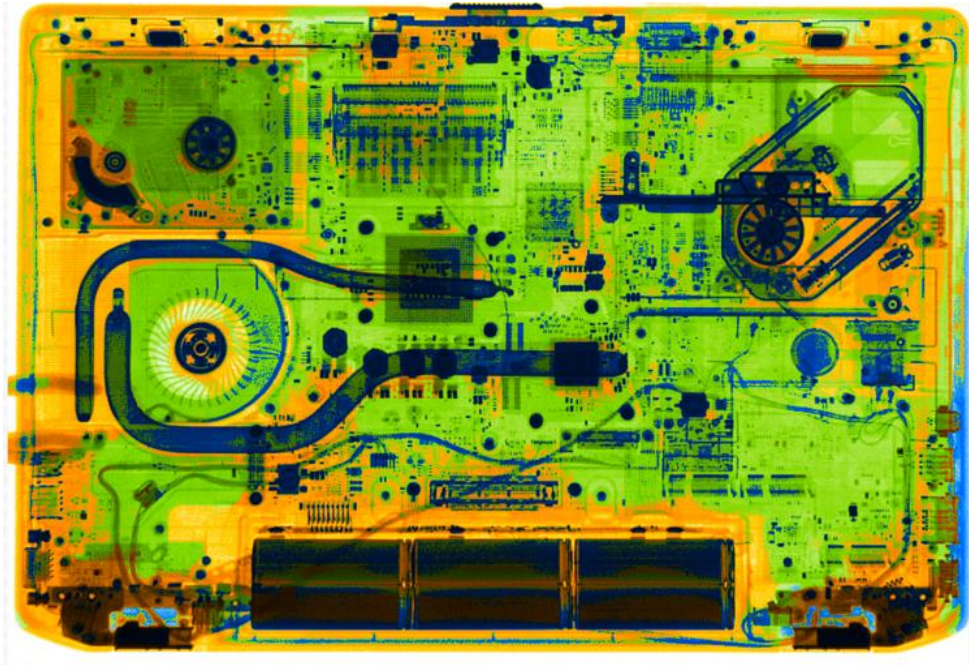
Expanded foam support

- Portable pulsed X-ray generator, 100 kV_p, 1 mAs
- Flat panel detector, 127 μm pixel size

Organic
"Poor" metal (none in this image)
Metal
Not classified (beyond trained limits)



Laptop



Organic
"Poor" metal
Metal

- Portable, continuous X-ray generator, 120 kV_p
- Line scanner detector
- Classification limits not applied





See what's really there with

IBEX Trueview™

IBEX Innovations Ltd.

Explorer 2, NETPark,
Sedgefield, TS21 3FF
UK

Registered in England and Wales: 07208355
enquiries@ibexinnovations.co.uk
+44 (0) 1740 617770

www.ibexinnovations.co.uk

© 2018 IBEX
Innovations Ltd.

Slide 19

