

Alarm Resolution Capability Management

Accessible Property Screening Strategy



Kevin Chan

Alarm Resolution Capability Manager

Kevin.Chan@tsa.dhs.gov

November 5, 2019



Transportation
Security
Administration

Alarm Resolution (AR) Capability Management Mission

Advancing Materiel and Non-Materiel capabilities to accurately identify, analyze, verify and resolve alarms within the TSA security ecosystem.



Identify

- Enable the end-users to accurately **identify, retrieve, and sample the alarm** on an individual's person and/or property required for secondary screening



Analyze

- Utilize capabilities available in the field to **characterize the alarm material**



Verify

- Empower end-users to confidently **determine whether the alarm is a threat or benign**



Resolve

- **Determine if the individual and/or property can be cleared** and allowed into the sterile area, or denied entry



Alarm Resolution Checkpoint Accessible Property Ecosystem

Alarm Resolution Utilization

Checkpoint Accessible Property Screening

1

Alarm Resolution

Officers utilize a multitude of tools to resolve alarms



Explosive Trace Detector (ETD)



Colorimetric Kits



Bottle Liquid Scanner (BLS)

2

Advanced Alarm Resolution

To resolve advanced alarms, TSS-Es are utilized



Chemical Analysis Device (CAD)



Colorimetric Kits



Alarm Resolution (AR) Checkpoint Capability Statements

Advancing Materiel and non-Materiel capabilities to accurately identify, analyze, and resolve alarms within the TSA security ecosystem.



1. Resolve Alarms Through Primary Screening Methods

Resolve all alarms at the Opportunities of Encounter (OOE), including: as Advanced Technology 2 (AT-2), Computed Tomography (CT), etc.



2. Resolve Alarms Escalated by TSOs

Resolve all alarms by Transportation Security Officers (TSOs) to Transportation Security Explosive Specialists (TSS-Es) by utilizing Advanced Alarm Resolution (AAR). An alarm is escalated to AAR when TSOs are unable to resolve it with the available procedures and technology.



3. Promote Interoperability (Primary Screening through AAR)

Utilize switchable algorithms based on the level of screening and allowing the systems to collect more data to enable machine learning and Artificial Intelligence (AI) capabilities.



4. Communicate With TSA Enterprise Architecture

Allow TSE to communicate with TSA Enterprise Architecture to allow system updates of new algorithms and alarms on emerging threats and enhance TSA HQ visibilities, allowing for more informed decisions regarding security operations.

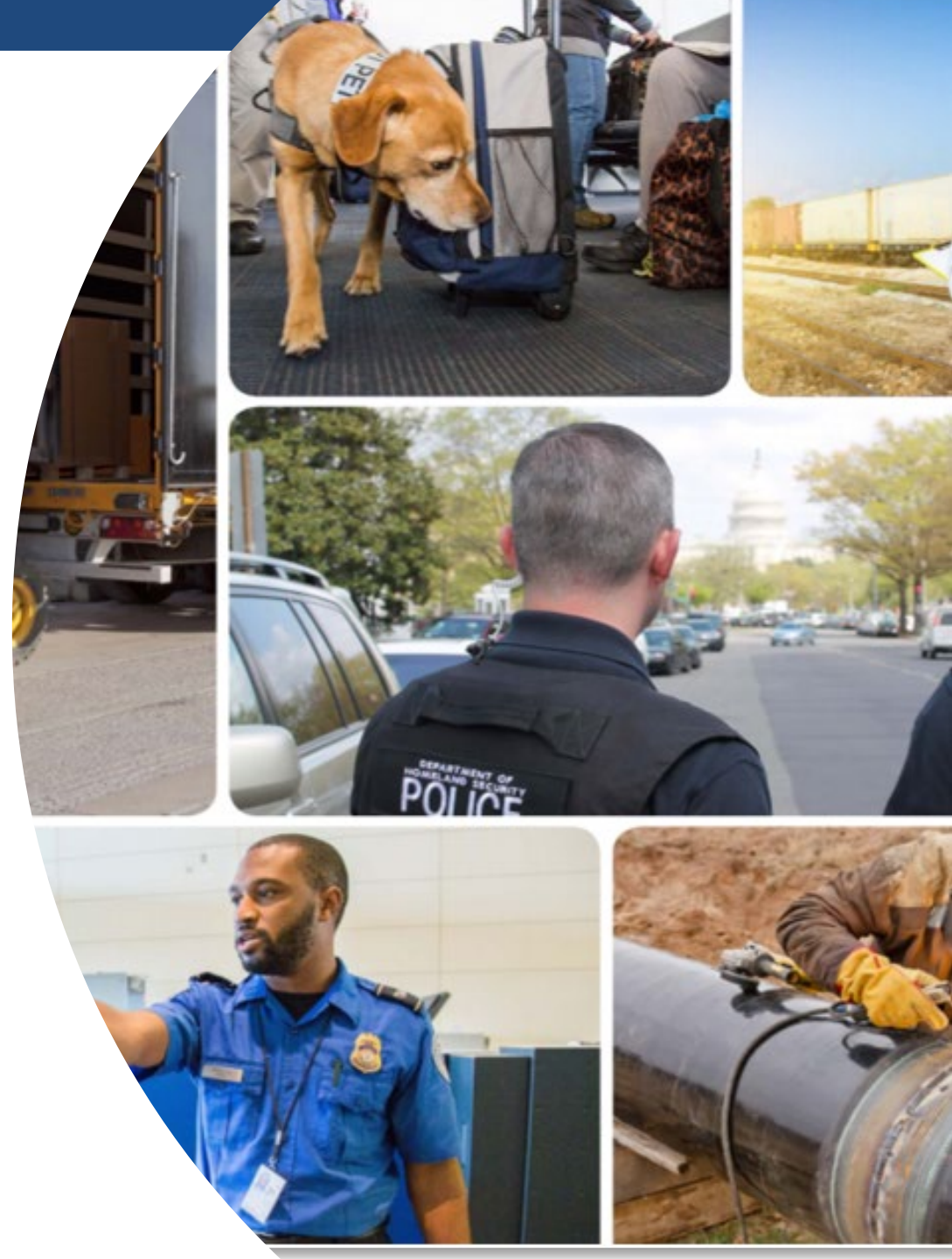


5. Augment Alarm Resolution Operations Via Automation

Reduce the cognitive load of TSOs by increasing automation and decreasing the amount of decisions that a TSO must make when resolving an alarm.



“Not on Our Watch”



Transportation
Security
Administration

Questions?



Transportation
Security
Administration