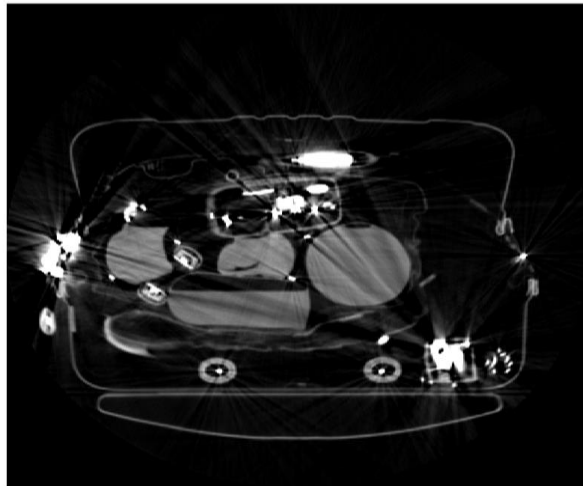


Simultaneous Iterative Reconstruction and Segmentation

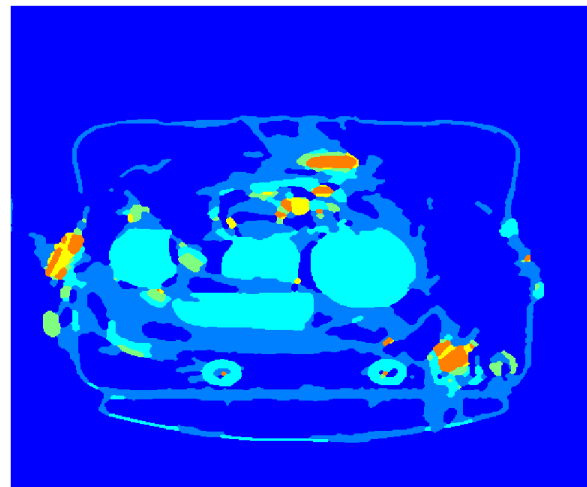
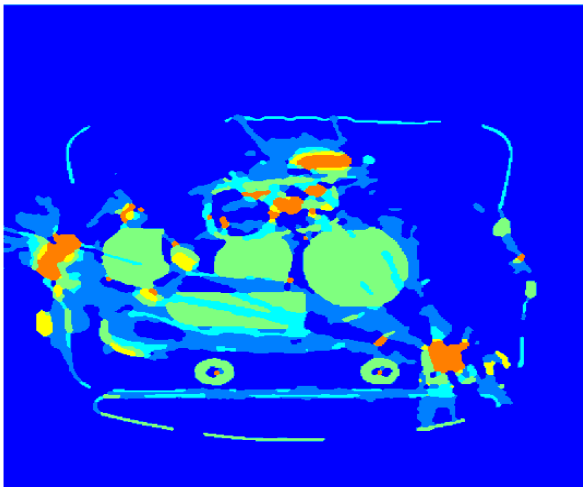
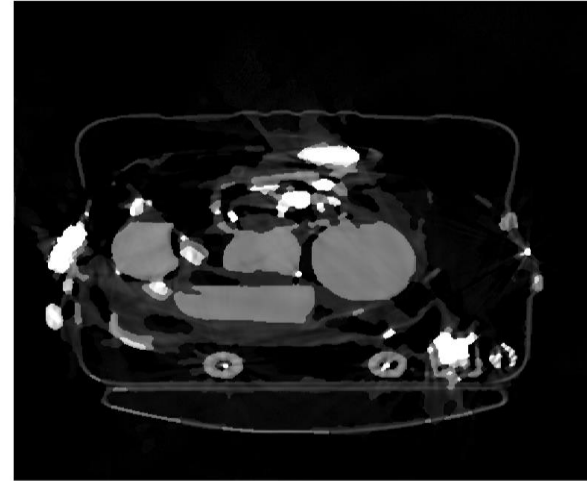
Jun Zhang and Hongquan Zuo
Department of Electrical Engineering
and Computer Science
University of Wisconsin, Milwaukee
(unfunded participant)

Results

XREC

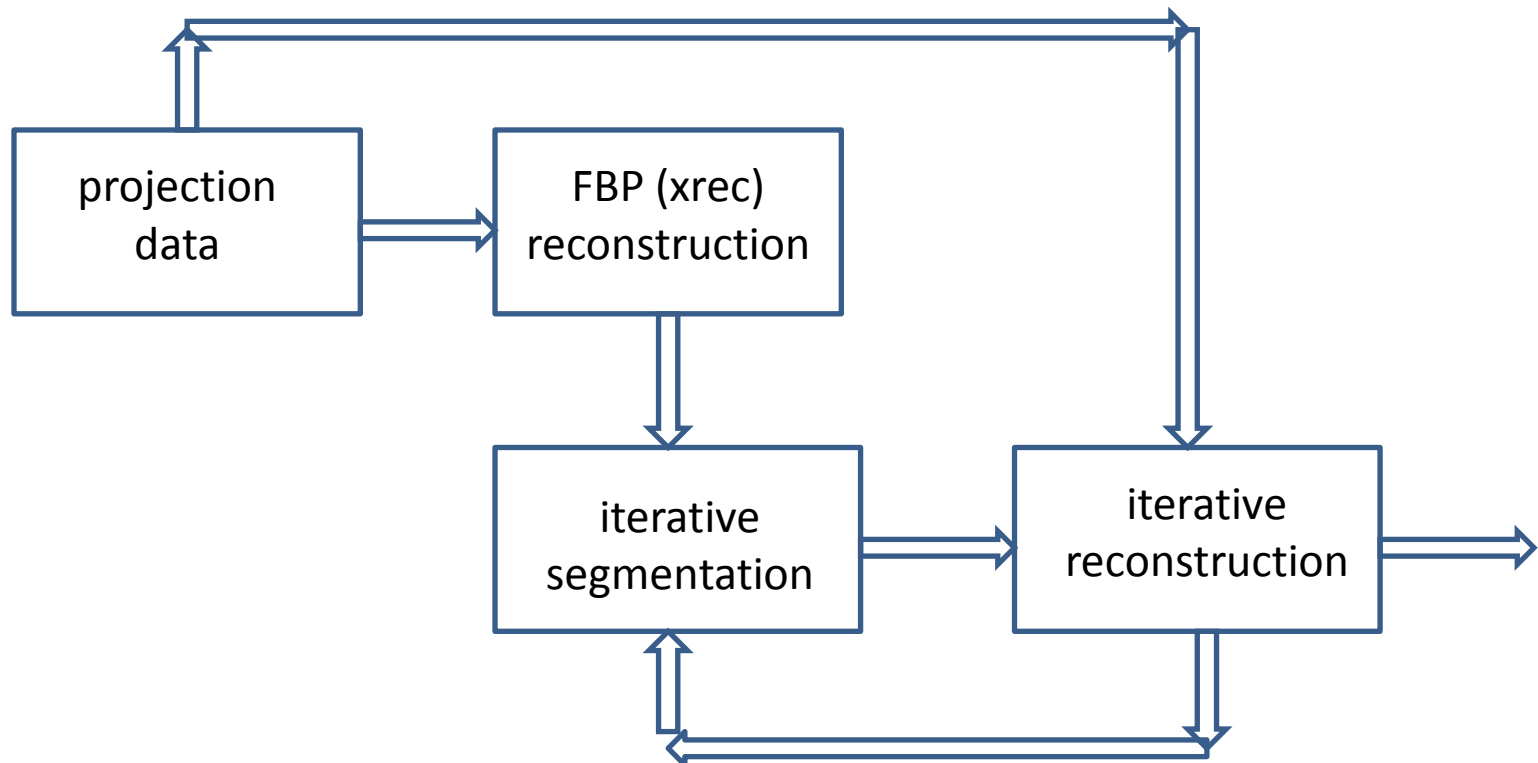


New Recon + Segmentation



Method

- Objective: use segmentation to improve recon and vice versa
- Iterative implementation: alternating between segmentation and reconstruction



Limitations and Next Steps

- Limitations
 - Projection model: only considered Poisson noise
 - Image model: also relatively simplistic
 - Segmentation: needs to know the number of classes
- Next steps
 - Incorporate other artifact models (e.g., beam-hardening)
 - Improve image model
 - Determine the number of classes from data
 - Process additional cases and apply cloud metrics

Acknowledgements

- ALERT for access to the projection data.
- Charlie Bouman, Ken Sauer, and Pengchong Jin for the use of their projection matrix.